



15 August 2016

Year: 2016

Week: 32

In This Issue:

Key messages.
Syndromic indicators at a glance.
Data summary.
Indicators by syndrome.
Cold/flu.
Fever.
Cough.
Difficulty Breathing.
Sore throat.
Diarrhoea.
Vomiting.
Eye problems.
Introduction to charts.
Notes and further information.
Acknowledgements.

Key messages

Data to: 14 August 2016

Insect bite calls remained elevated during week 32, particularly in the 5 to 14 year age group (figures 11 & 11a) in line with the recent warm weather.

Diarrhoea calls increased over the weekend of week 32, mainly in the under 1 year age group (figures 7 & 7a).

A Heat-Health Watch system operates in England from 1 June to 15 September each year. As part of the Heatwave Plan for England, the PHE Real-time Syndromic Surveillance team will be routinely monitoring the public health impact of hot weather using syndromic surveillance data during this period.

Heat-health watch level (current reporting week): Level 1 [Summer preparedness](http://www.metoffice.gov.uk/weather/uk/heathealth/)
<http://www.metoffice.gov.uk/weather/uk/heathealth/>

Syndromic indicators at a glance:

Indicator	Trend	Level *
Cold/flu	no trend	similar to baseline levels
Fever	decreasing	above baseline levels
Cough	decreasing	above baseline levels
Difficulty breathing	decreasing	above baseline levels
Sore throat	decreasing	above baseline levels
Diarrhoea	no trend	above baseline levels
Vomiting	no trend	above baseline levels
Eye problems	no trend	above baseline levels
Heatstroke	no trend	above baseline levels

*Since week 47 2014 new baselines have been introduced for comparison with previous years. Baselines use historical data from the NHS Direct surveillance system to estimate seasonal trend but with levels adjusted to reflect changes since the switch to using NHS 111 data in September 2013.

Data summary:

Year	Week	Total calls
2016	32	186,893

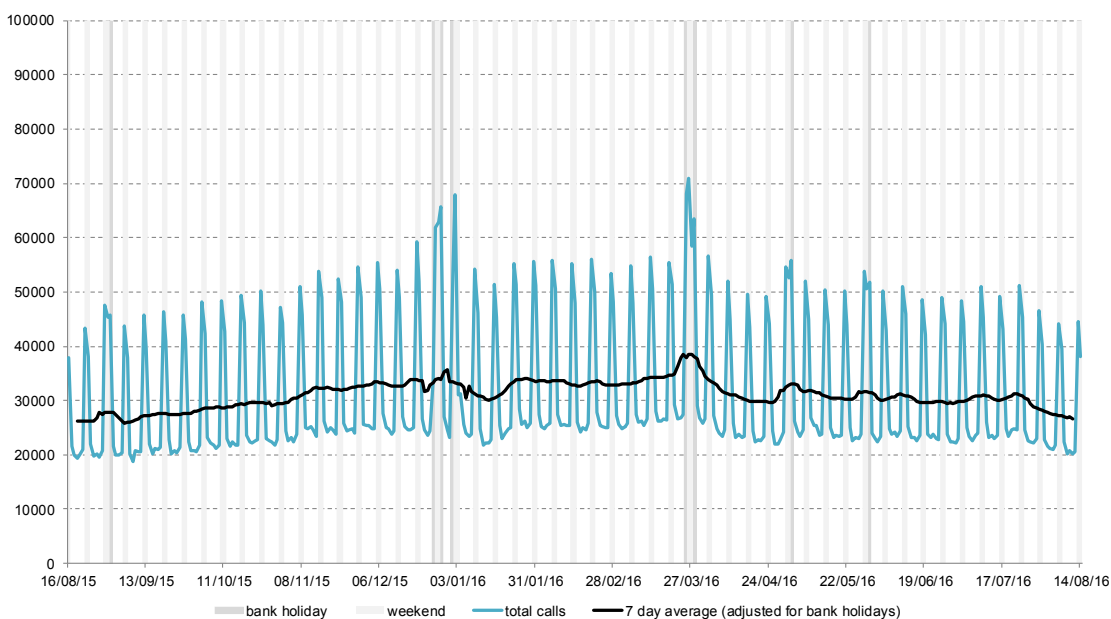
15 August 2016

Year: 2016

Week: 32

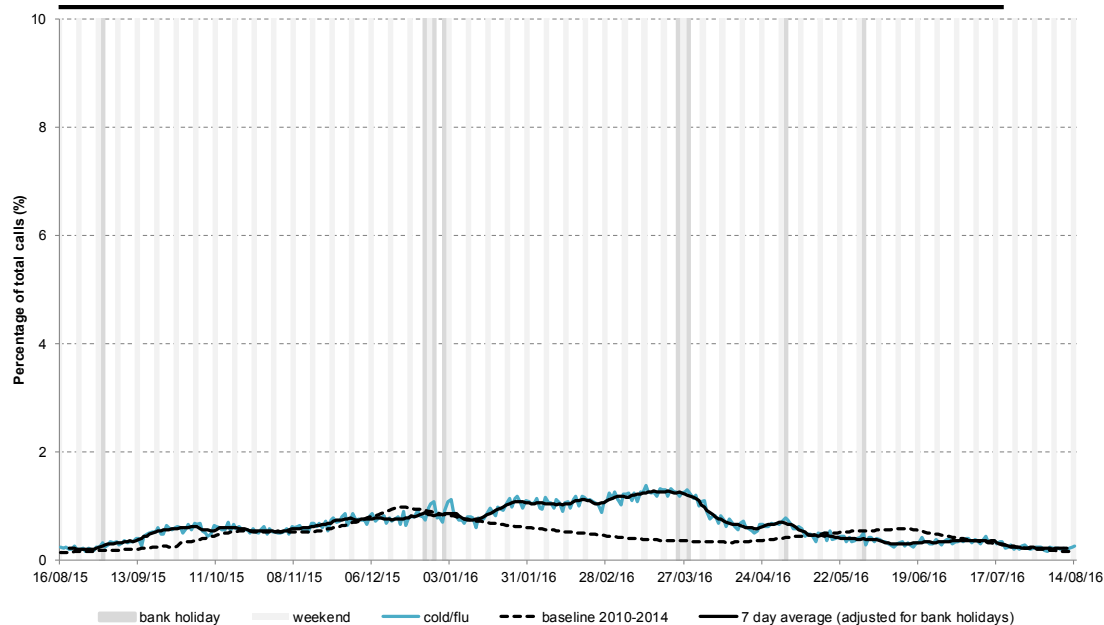
1: Total calls.

The total number of syndromic calls recorded each day by NHS 111.



2: Cold/flu

Daily 'cold/flu' calls as a percentage of total calls. Baselines are constructed from historical data since 2010, including data from NHS 111 and NHS Direct.



Intentionally blank

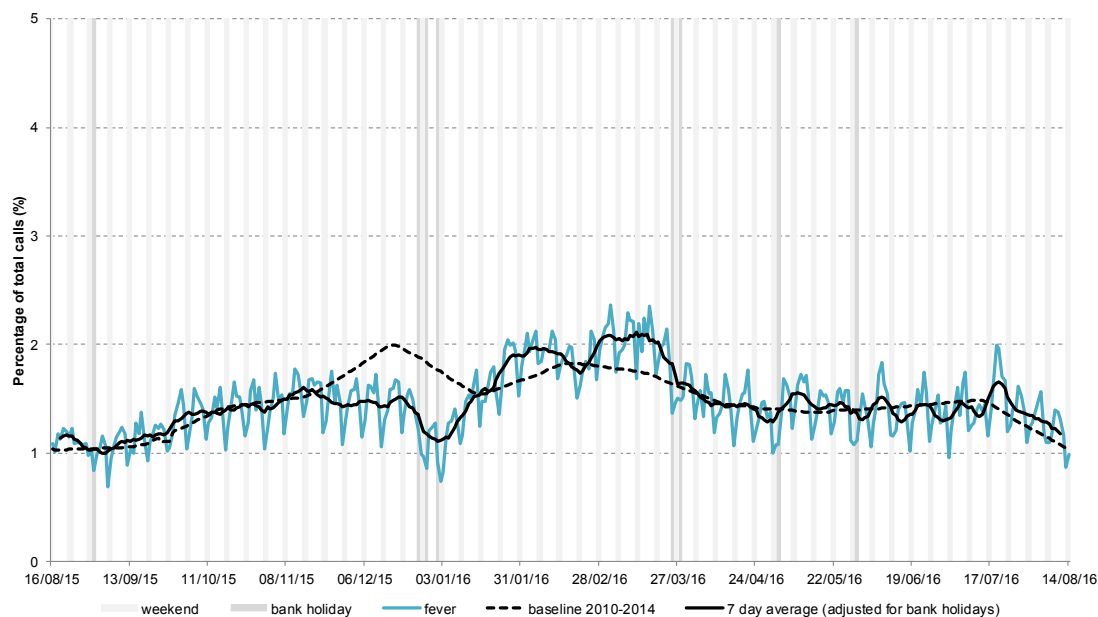
15 August 2016

Year: 2016

Week: 32

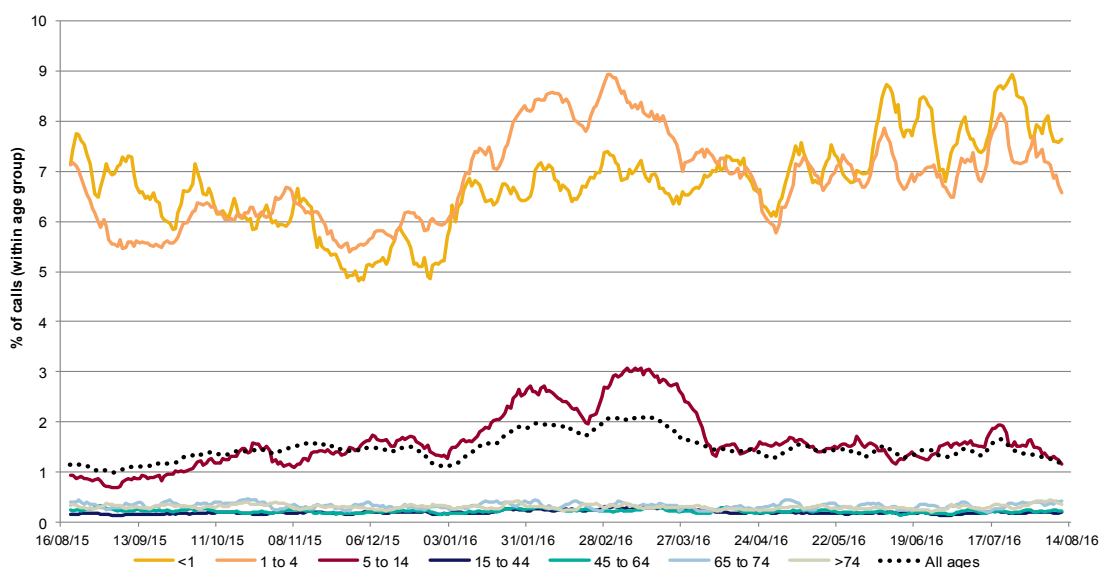
3: Fever

Daily 'fever' calls as a percentage of total calls. Baselines are constructed from historical data since 2010, including data from NHS 111 and NHS Direct.



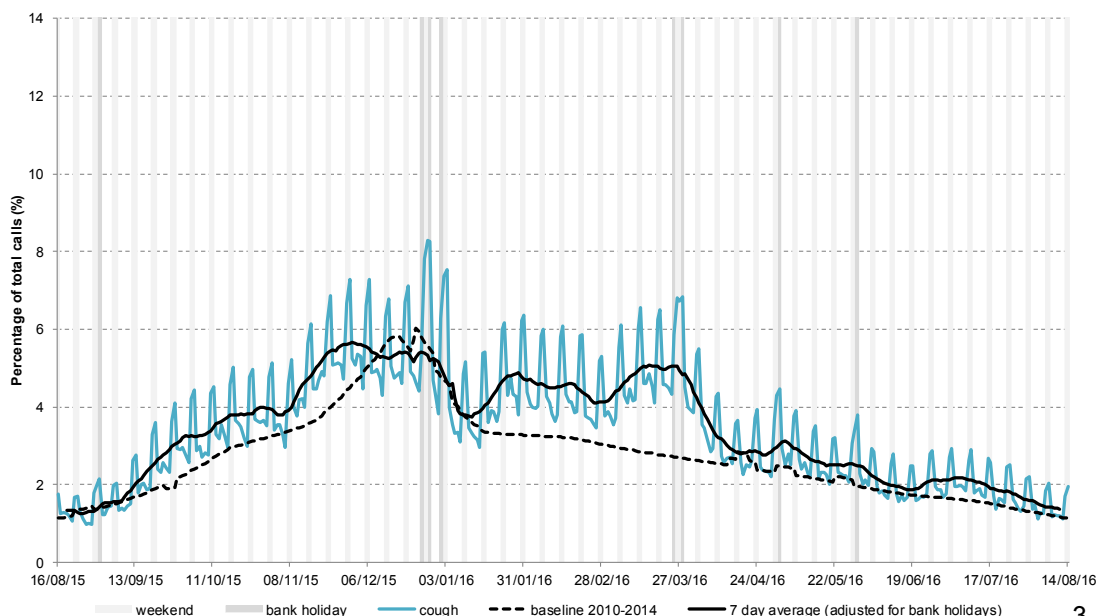
3a: Fever calls by age group

Fever calls as a percentage of total calls within each age group, shown as a 7 day moving average adjusted for bank holidays.



4: Cough

Daily 'cough' calls as a percentage of total calls. Baselines are constructed from historical data since 2010, including data from NHS 111 and NHS Direct.



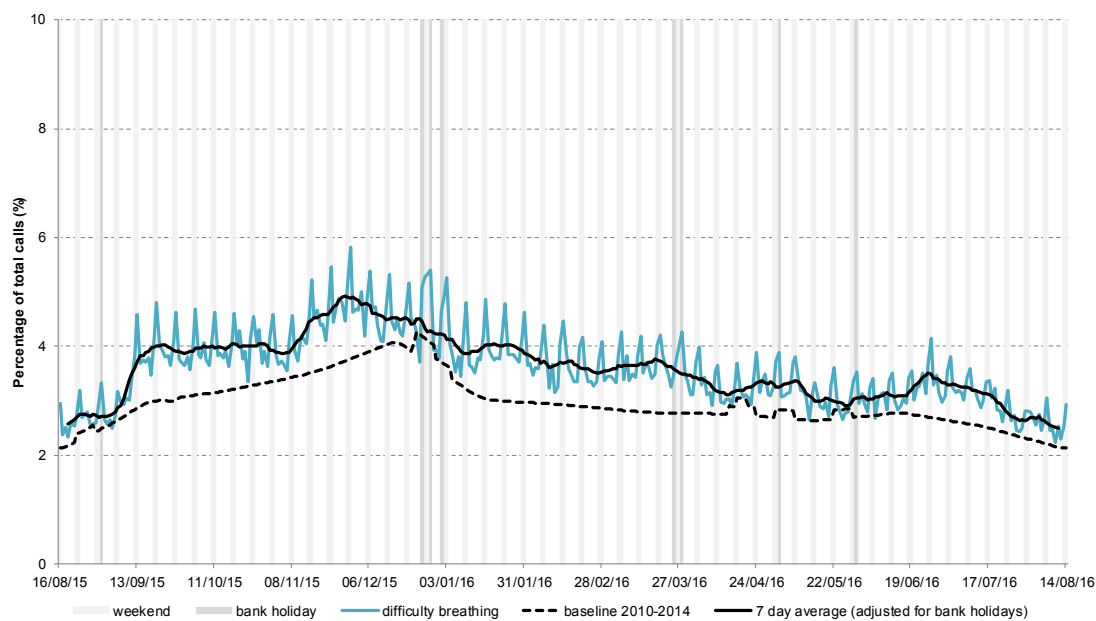
15 August 2016

Year: 2016

Week: 32

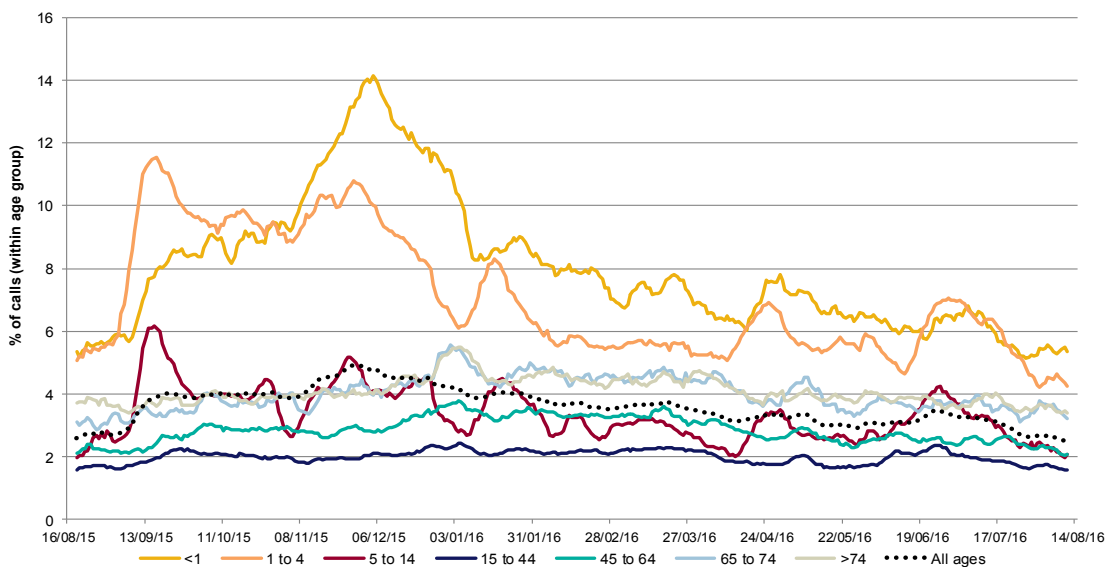
5: Difficulty breathing

Daily 'difficulty breathing' calls as a percentage of total calls. Baselines are constructed from historical data since 2010, including data from NHS 111 and NHS Direct.



5a: Difficulty breathing calls by age group

Difficulty breathing calls as a percentage of total calls within each age group, shown as a 7 day moving average adjusted for bank holidays.



Intentionally blank

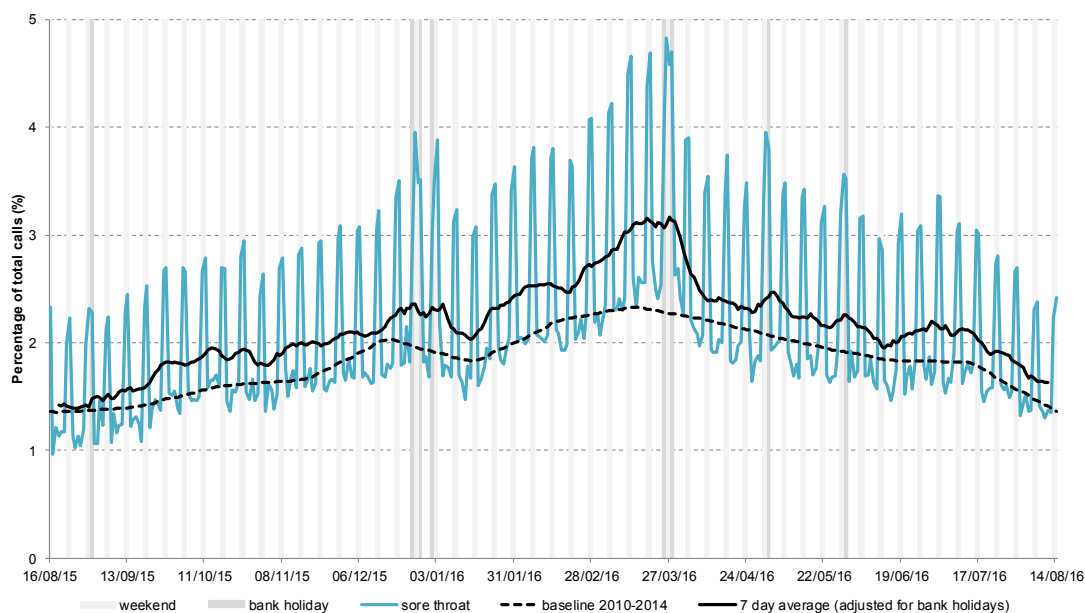
15 August 2016

Year: 2016

Week: 32

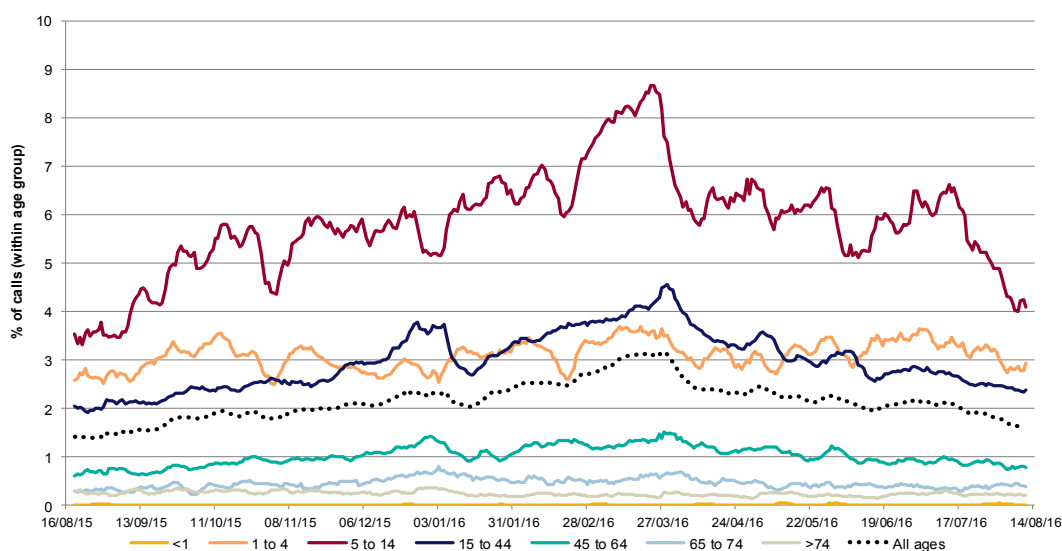
6: Sore throat

Daily 'sore throat' calls as a percentage of total calls. Baselines are constructed from historical data since 2010, including data from NHS 111 and NHS Direct.



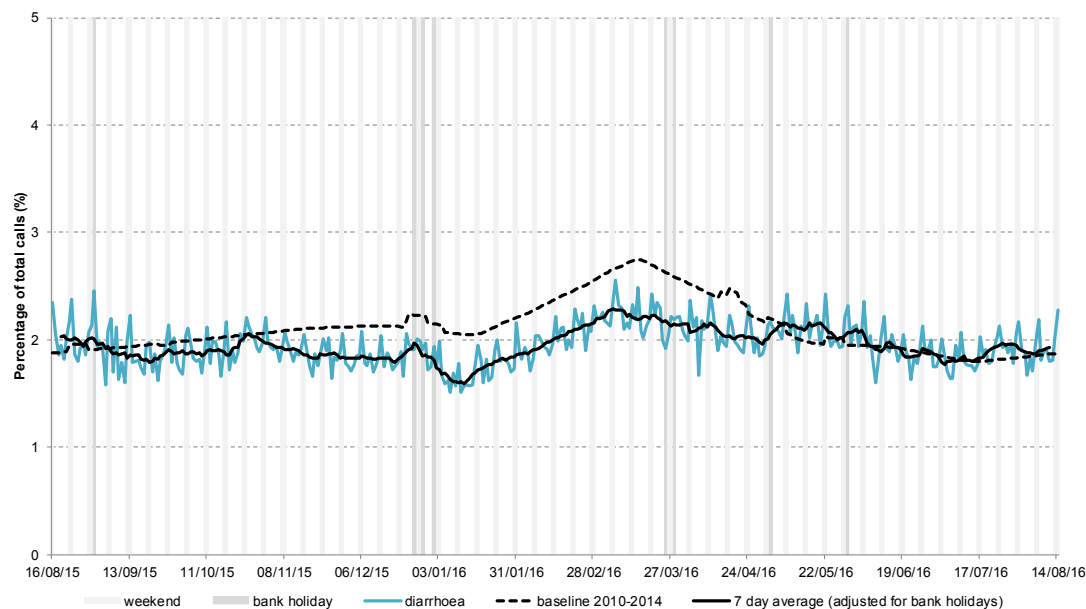
6a: Sore throat by age group

Sore throat calls as a percentage of total calls within each age group, shown as a 7 day moving average adjusted for bank holidays.



7. Diarrhoea

Daily 'diarrhoea' calls as a percentage of total calls. Baselines are constructed from historical data since 2010, including data from NHS 111 and NHS Direct.



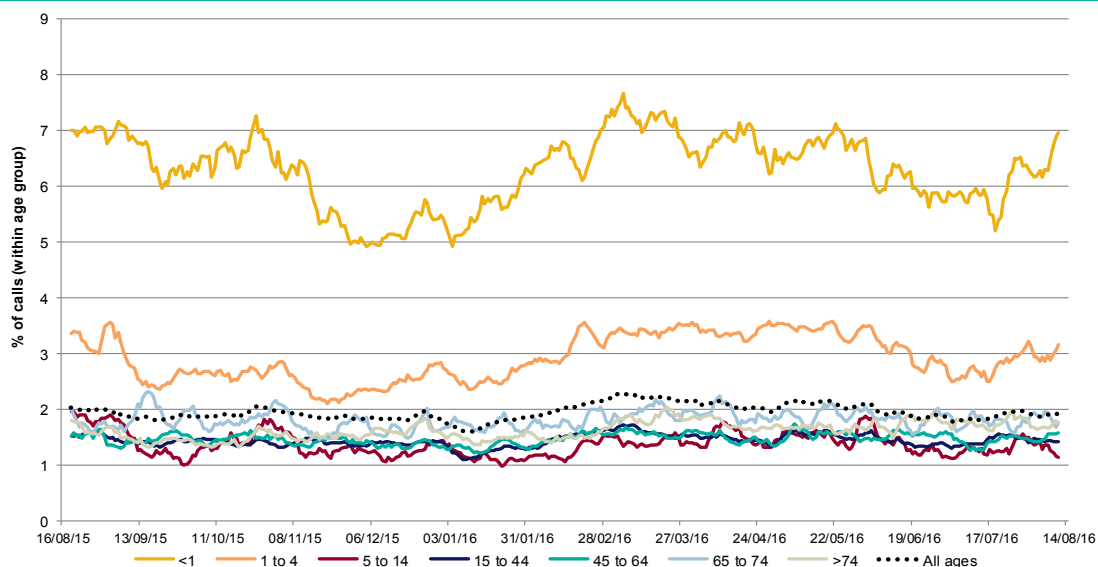
15 August 2016

Year: 2016

Week: 32

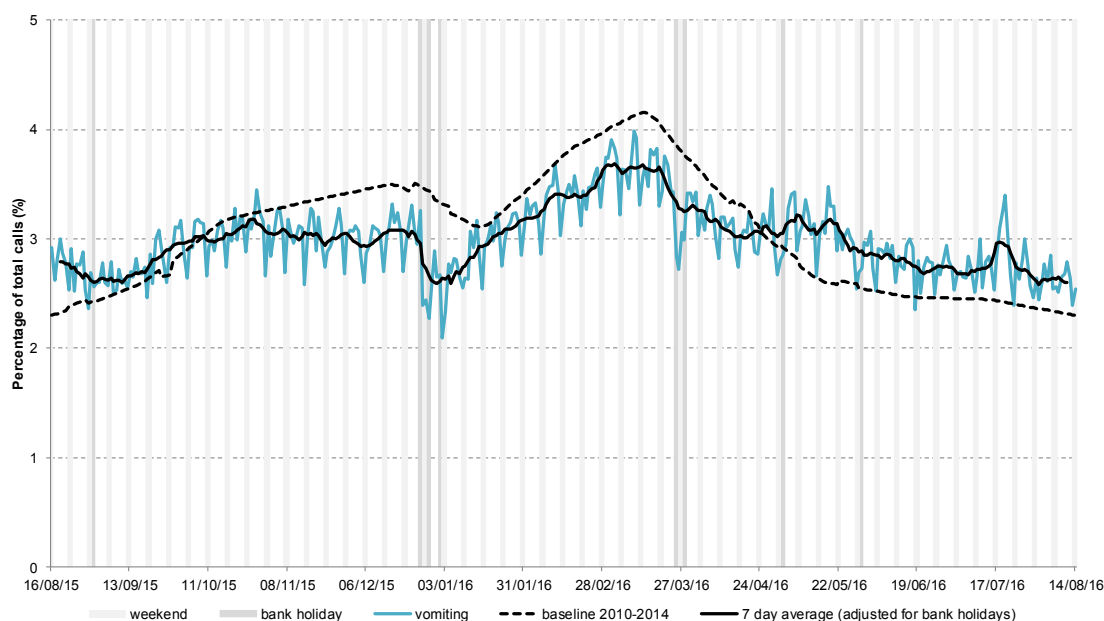
7a: Diarrhoea by age group

Diarrhoea calls as a percentage of total calls within each age group, shown as a 7 day moving average adjusted for bank holidays.



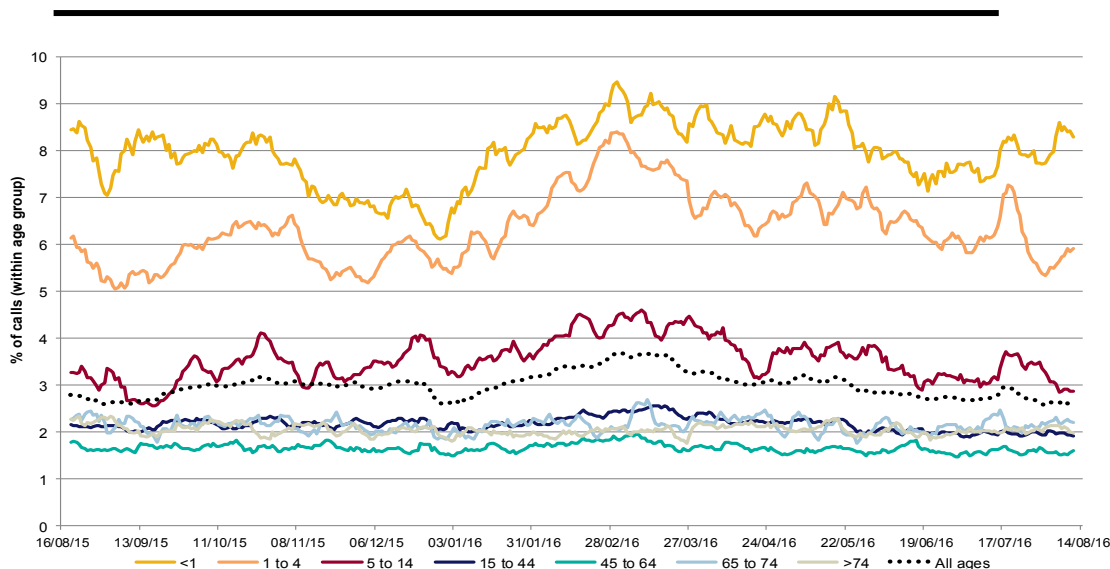
8: Vomiting

Daily 'vomiting' calls as a percentage of total calls. Baselines are constructed from historical data since 2010, including data from NHS 111 and NHS Direct.



8a: Vomiting by age group

Vomiting calls as a percentage of total calls within each age group, shown as a 7 day moving average adjusted for bank holidays.



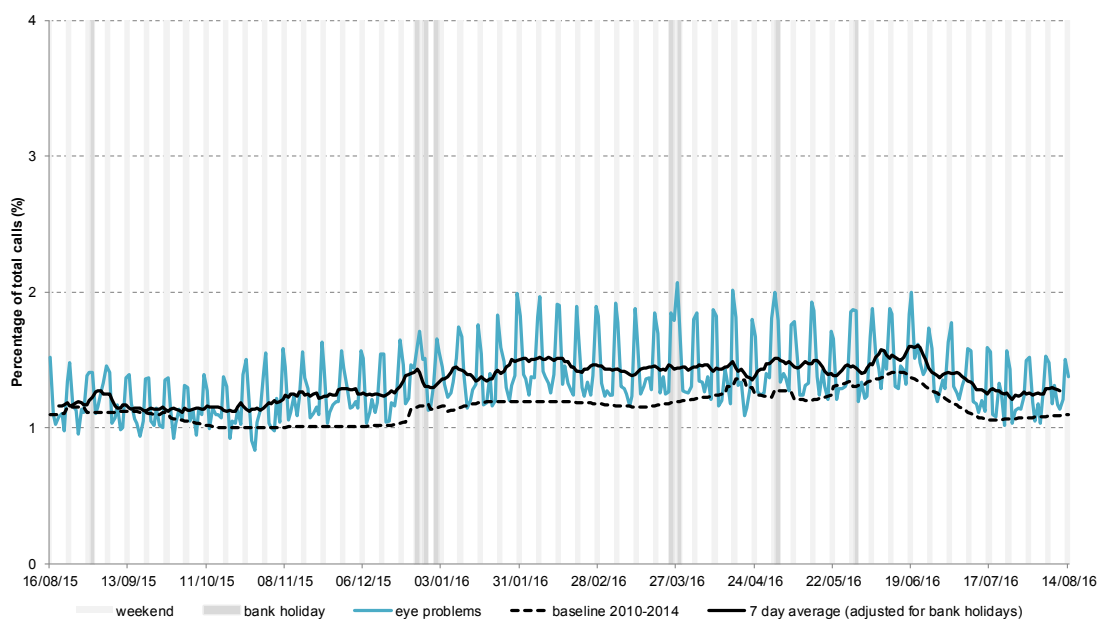
15 August 2016

Year: 2016

Week: 32

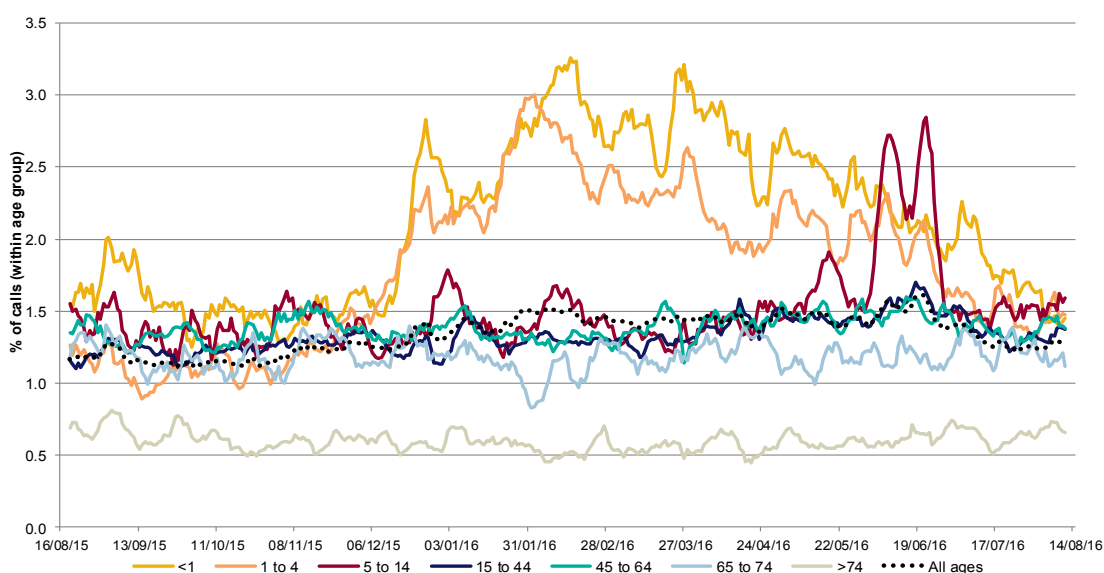
9: Eye problems

Daily 'eye problems' calls as a percentage of total calls. Baselines are constructed from historical data since 2010, including data from NHS 111 and NHS Direct.



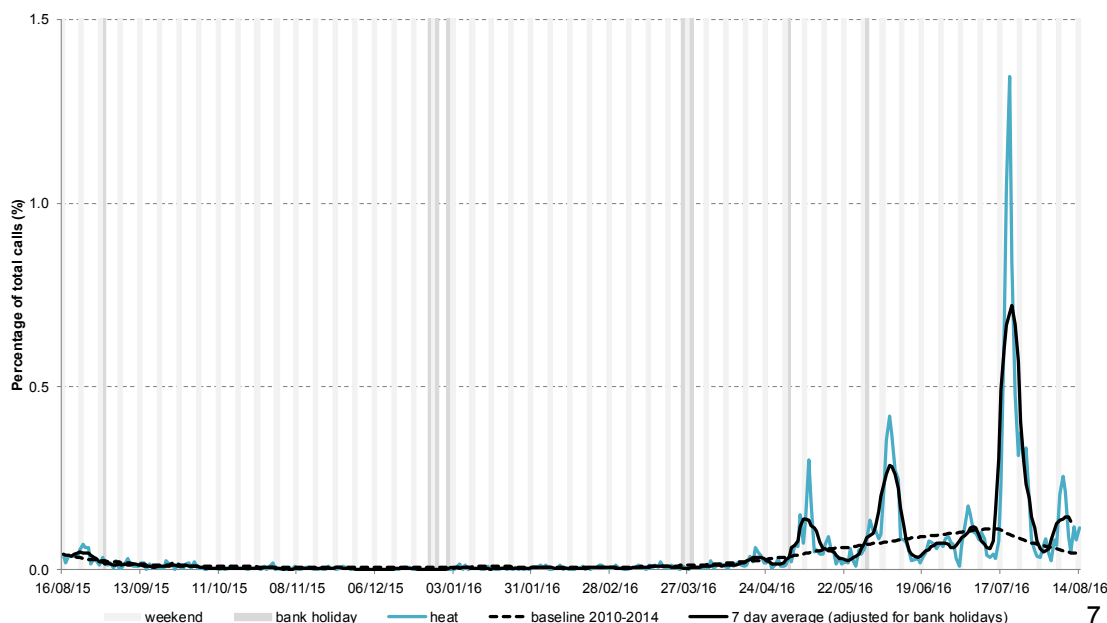
9a: Eye problems by age group

Eye problems calls as a percentage of total calls within each age group, shown as a 7 day moving average adjusted for bank holidays.



10. Heat/sun stroke

Daily 'heat/sun stroke' calls as a percentage of total calls. Baselines are constructed from historical data since 2010, including data from NHS 111 and NHS Direct.



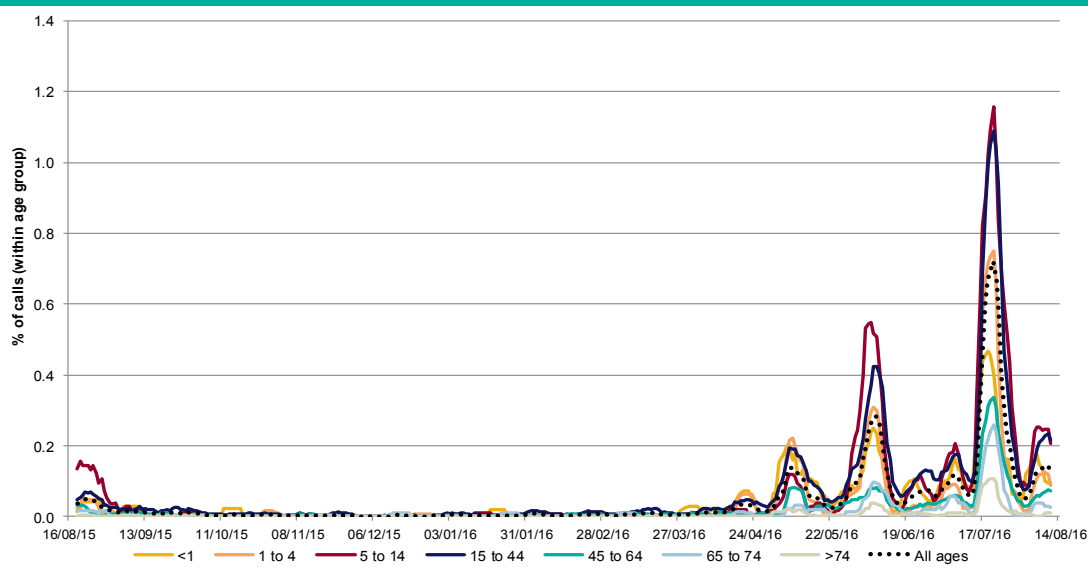
15 August 2016

Year: 2016

Week: 32

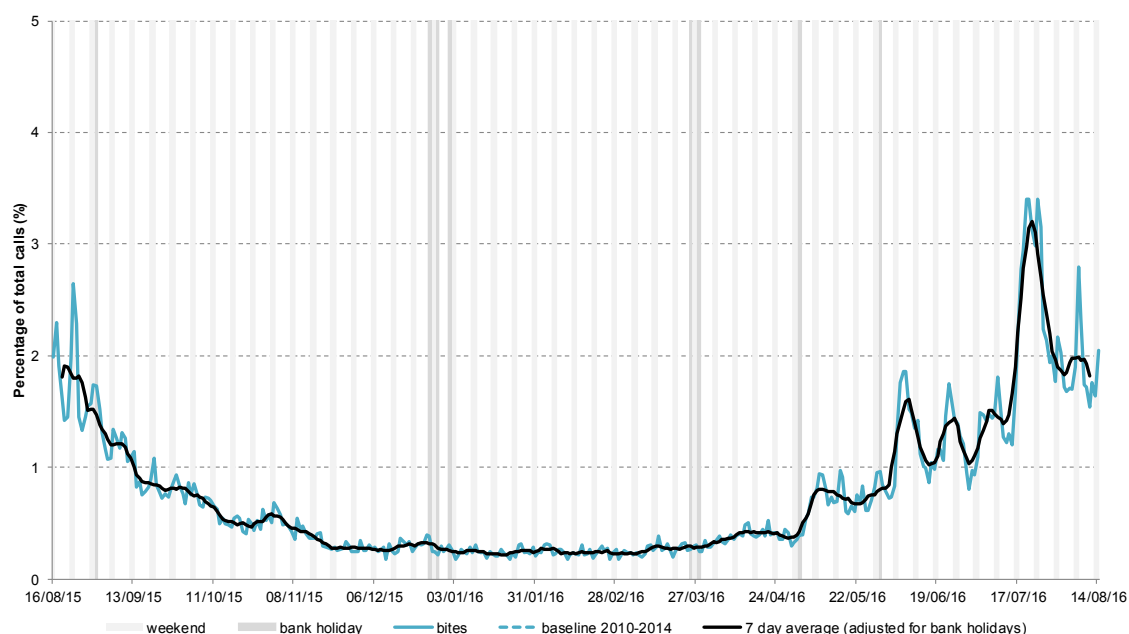
10a: Heat/sun stroke by age group

'Heat/sun stroke' calls as a percentage of total calls within each age group, shown as a 7 day moving average adjusted for bank holidays.



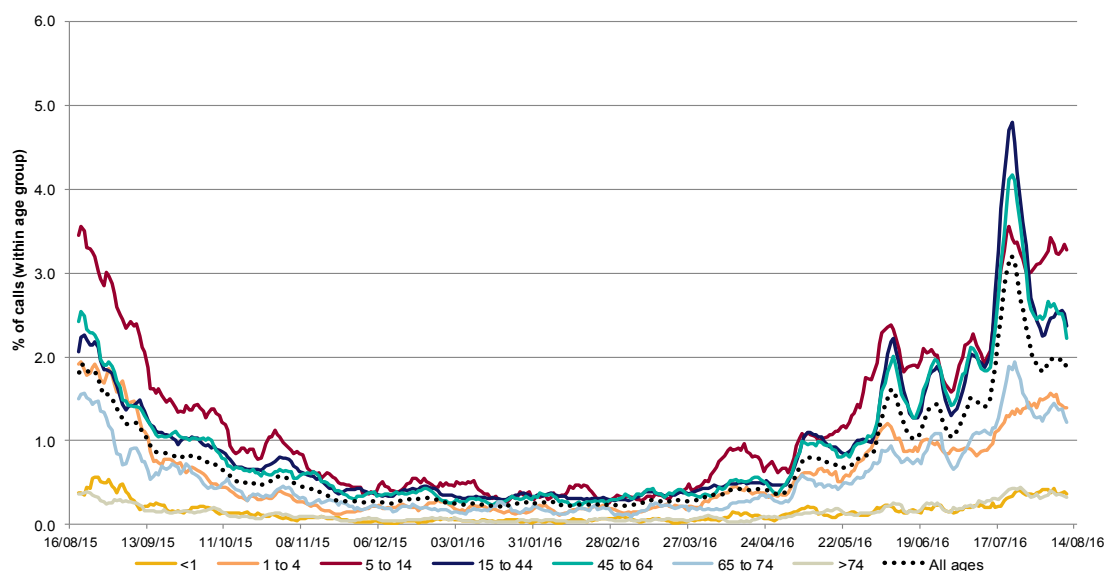
11: Insect bites

Daily 'insect bites' calls as a percentage of total calls. Baselines are constructed from historical data since Sept 2013.



11a: Insect bites by age group

'Insect bites' calls as a percentage of total calls within each age group, shown as a 7 day moving average adjusted for bank holidays.



Introduction to charts:

- Weekends and bank holidays are marked by vertical **grey** lines (bank holidays **darker grey**).
- A 7-day moving average (adjusted for bank holidays) is overlaid on the daily data reported in each chart, unless specified.
- Baselines are constructed using historical data, including data from both NHS111 and the NHS Direct syndromic system (which was replaced by NHS 111 data in September 2013). Seasonal trends reflect the average over past years, with levels adjusted to reflect differences between NHS 111 and NHS Direct data.
- This new syndromic surveillance system is still under development and further analyses at PHE Centre level will be included in future bulletins.
- NHS 111 call data are analysed on a daily basis to identify national and regional trends. A statistical algorithm underpins each system, routinely identifying activity that has increased significantly or is statistically significantly high for the time of year. Results from these daily analyses are assessed by the ReSST, along with analysis by age group, and anything deemed of public health importance is alerted by the team.

Notes and further information:

Further information about NHS 111 can be found at:

<http://www.nhs.uk/NHSEngland/AboutNHSservices/Emergencyandurgentcareservices/Pages/NHS-111.aspx>

The Remote Health Advice Syndromic Surveillance bulletin can also be downloaded from the PHE Real-time Syndromic Surveillance website which also contains more information about syndromic surveillance:

<https://www.gov.uk/government/collections/syndromic-surveillance-systems-and-analyses>

Acknowledgements:

We are grateful to NHS 111 and to HSCIC for their assistance and support in providing the anonymised call data that underpin the Remote Health Advice Syndromic Surveillance System.

Contact ReSST:
syndromic.surveillance
@phe.gov.uk

Remote Health Advice Syndromic Surveillance System Bulletin.

Produced by: PHE Real-time Syndromic Surveillance Team
6th Floor, 5 St Philip's Place, Birmingham, B3 2PW

Tel: 0344 225 3560 > Option 4 > Option 2

Fax: 0121 236 2215

Web: <https://www.gov.uk/government/collections/syndromic-surveillance-systems-and-analyses>