



12 April 2016

Year: 2016

Week: 14

In This Issue:

- Key messages.
- Syndromic indicators at a glance.
- Data summary.
- Indicators by syndrome.
- Cold/flu.
- Fever.
- Cough.
- Difficulty Breathing.
- Sore throat.
- Diarrhoea.
- Vomiting.
- Eye problems.
- Introduction to charts.
- Notes and further information.
- Acknowledgements.

Key messages

Data to: 10 April 2016

NHS 111 cold/flu calls continued to decrease during week 14 but levels remain higher than expected for the time of year (figure 2).

There were also further decreases in NHS 111 calls for fever, cough, difficulty breathing and sore throat during week 14 (figures 3-6).

Syndromic indicators at a glance:

Indicator	Trend	Level *
Cold/flu	decreasing	above baseline levels
Fever	decreasing	similar to baseline levels
Cough	decreasing	above baseline levels
Difficulty breathing	decreasing	above baseline levels
Sore throat	decreasing	above baseline levels
Diarrhoea	no trend	below baseline levels
Vomiting	decreasing	below baseline levels
Eye problems	no trend	above baseline levels

*Since week 47 2014 new baselines have been introduced for comparison with previous years. Baselines use historical data from the NHS Direct surveillance system to estimate seasonal trend but with levels adjusted to reflect changes since the switch to using NHS 111 data in September 2013.

Data summary:

Year	Week	Total calls
2016	14	221,239

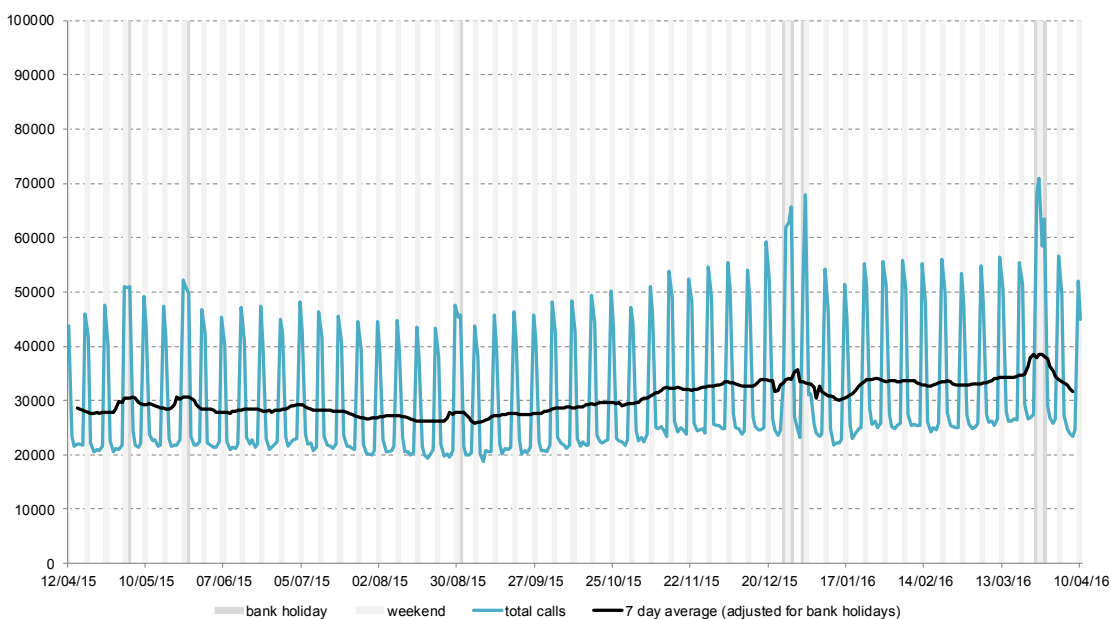
12 April 2016

Year: 2016

Week: 14

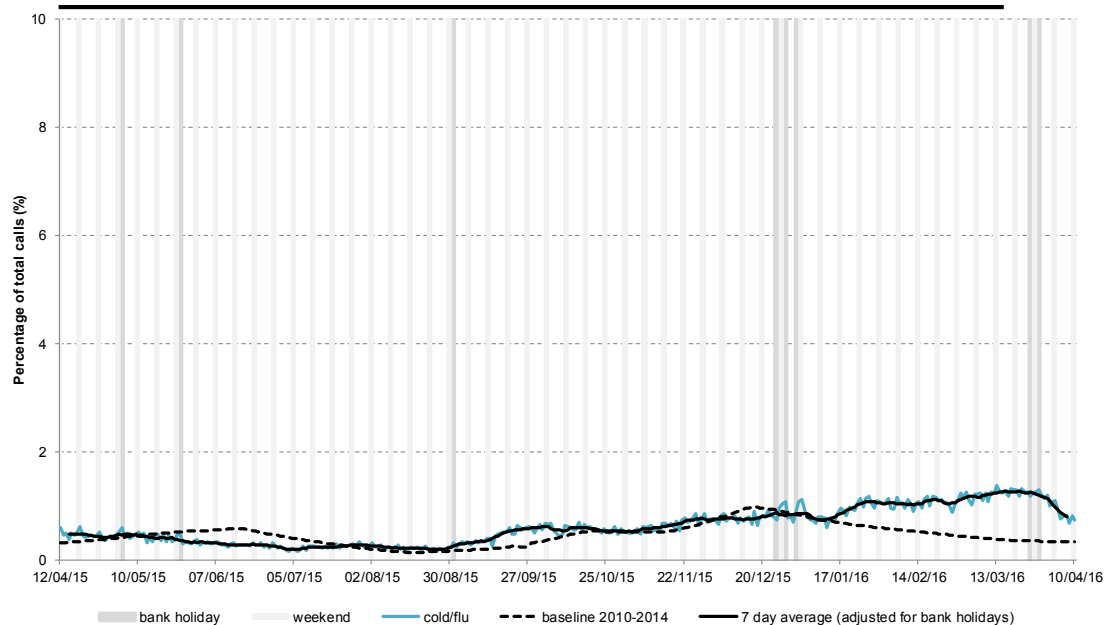
1: Total calls.

The total number of syndromic calls recorded each day by NHS 111.



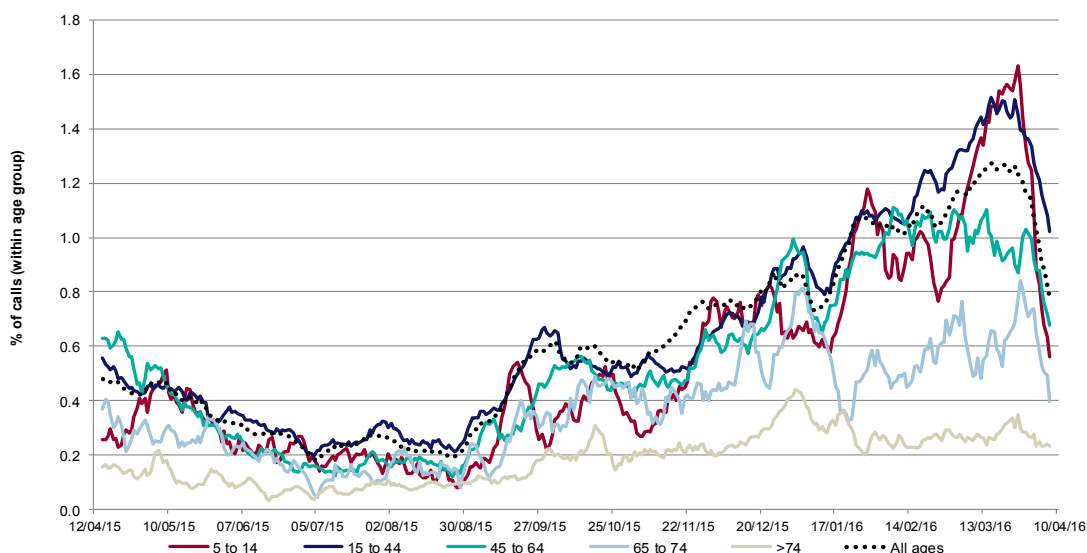
2: Cold/flu

Daily 'cold/flu' calls as a percentage of total calls. Baselines are constructed from historical data since 2010, including data from NHS 111 and NHS Direct.



2a: Cold/flu calls by age group

Cold/flu calls as a percentage of total calls within each age group, shown as a 7 day moving average adjusted for bank holidays. Age groups below 5 years old, not shown.



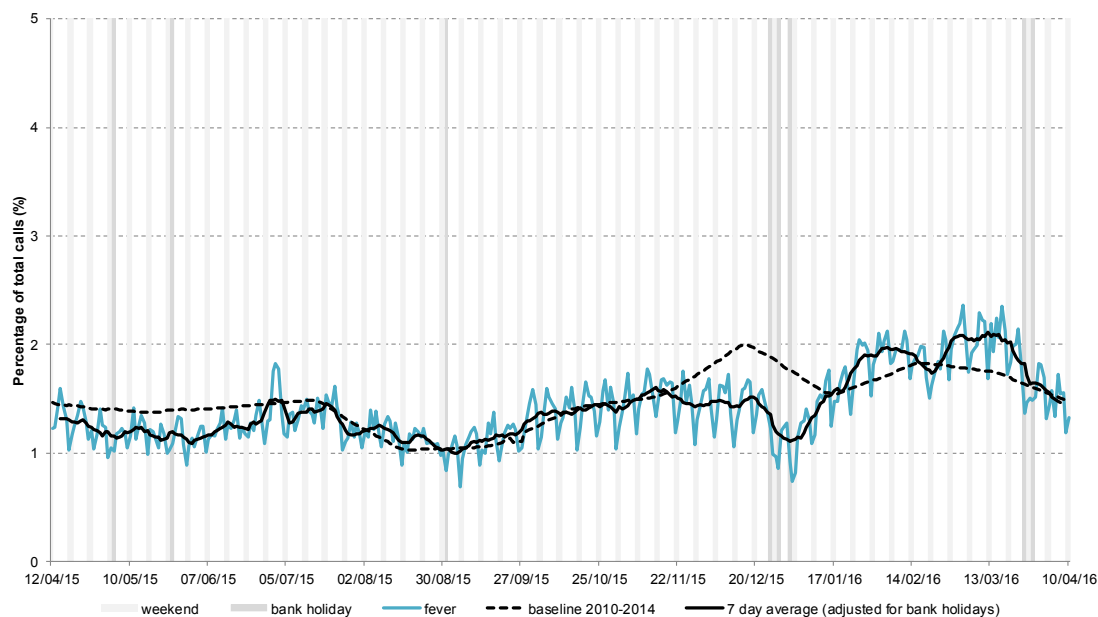
12 April 2016

Year: 2016

Week: 14

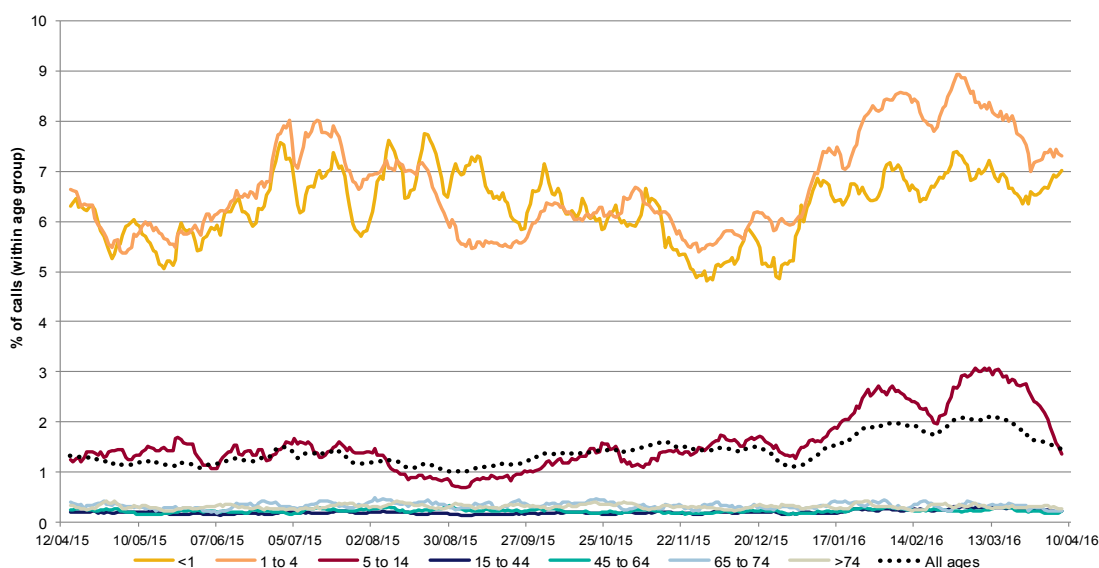
3: Fever

Daily 'fever' calls as a percentage of total calls. Baselines are constructed from historical data since 2010, including data from NHS 111 and NHS Direct.



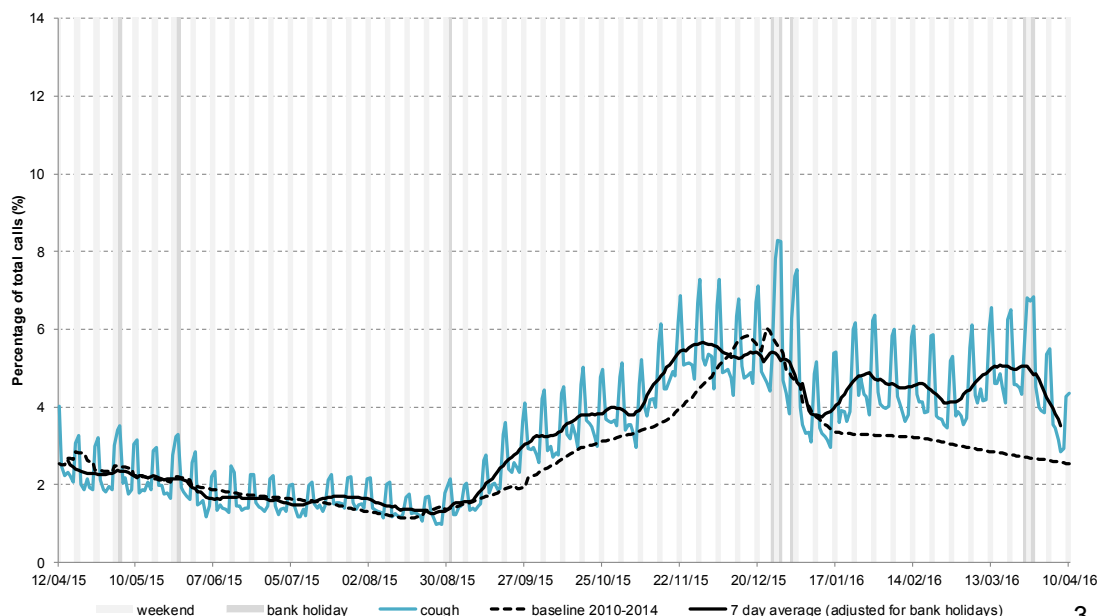
3a: Fever calls by age group

Fever calls as a percentage of total calls within each age group, shown as a 7 day moving average adjusted for bank holidays.



4: Cough

Daily 'cough' calls as a percentage of total calls. Baselines are constructed from historical data since 2010, including data from NHS 111 and NHS Direct.



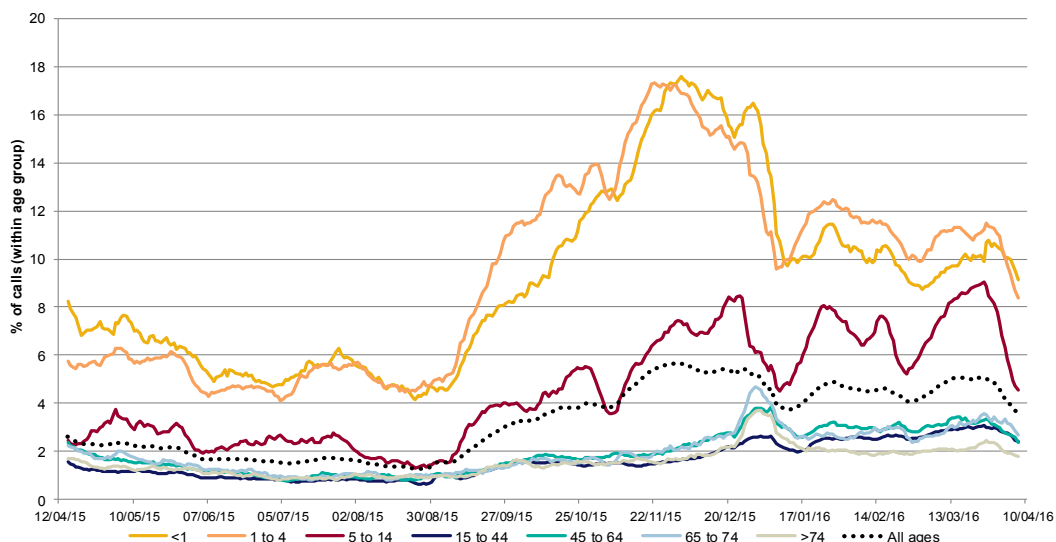
12 April 2016

Year: 2016

Week: 14

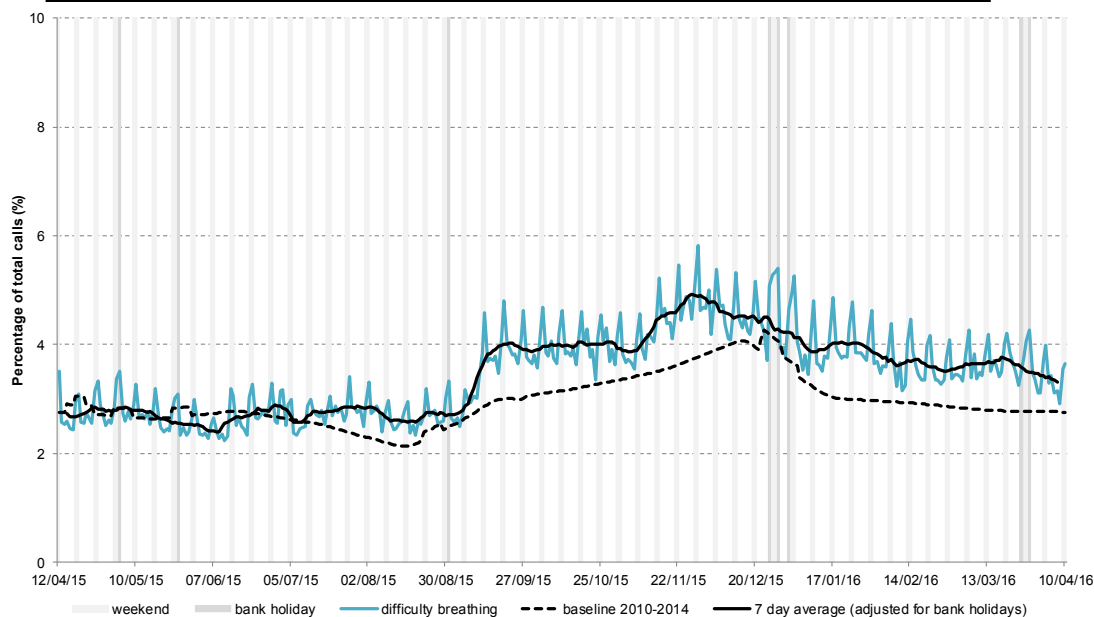
4a: Cough calls by age group

Cough calls as a percentage of total calls within each age group, shown as a 7 day moving average adjusted for bank holidays.



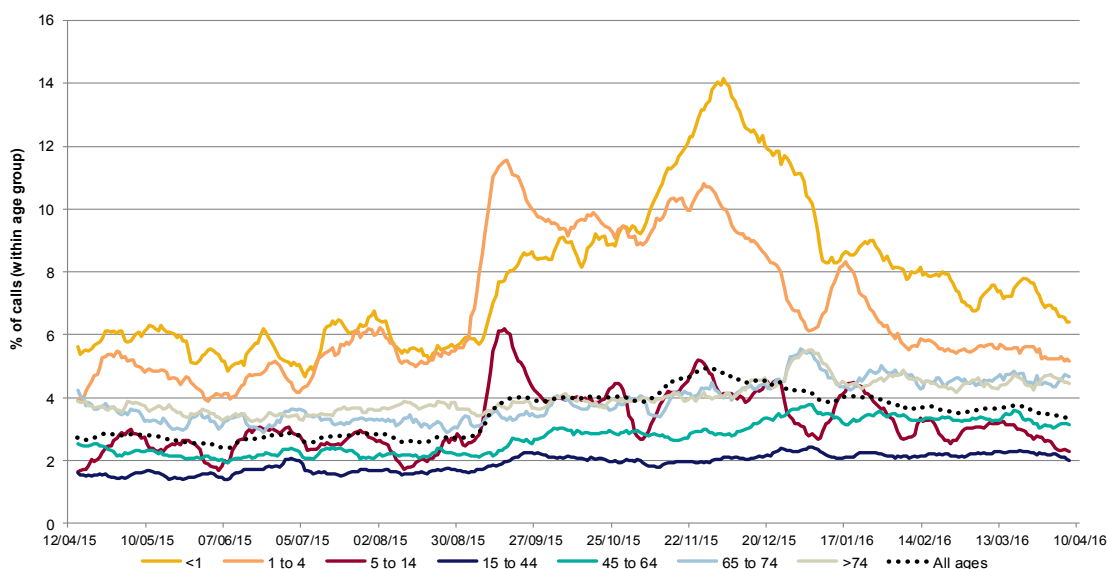
5: Difficulty breathing

Daily 'difficulty breathing' calls as a percentage of total calls. Baselines are constructed from historical data since 2010, including data from NHS 111 and NHS Direct.



5a: Difficulty breathing calls by age group

Difficulty breathing calls as a percentage of total calls within each age group, shown as a 7 day moving average adjusted for bank holidays.



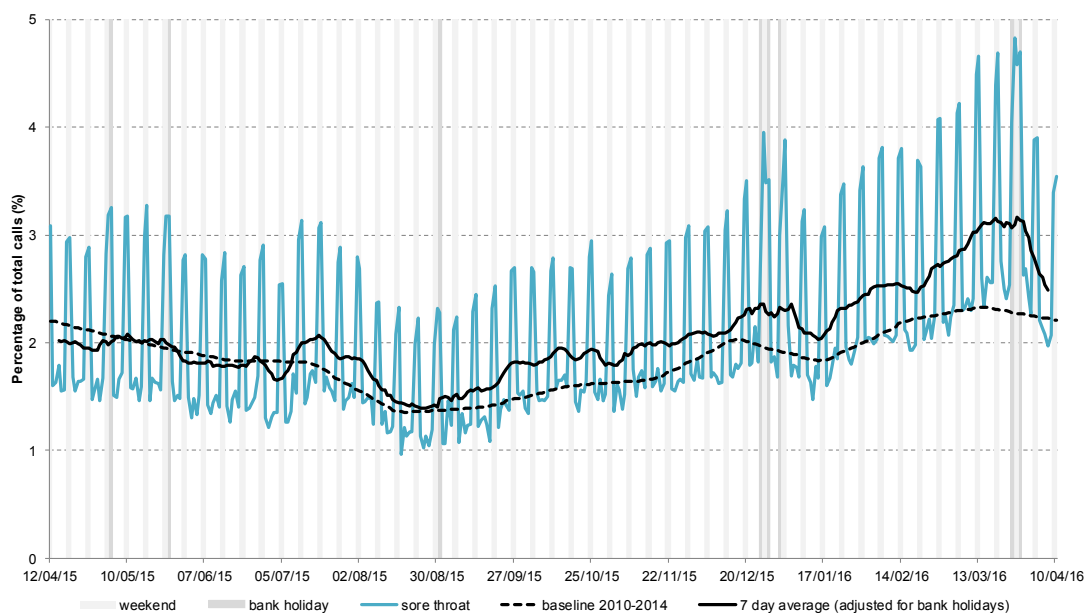
12 April 2016

Year: 2016

Week: 14

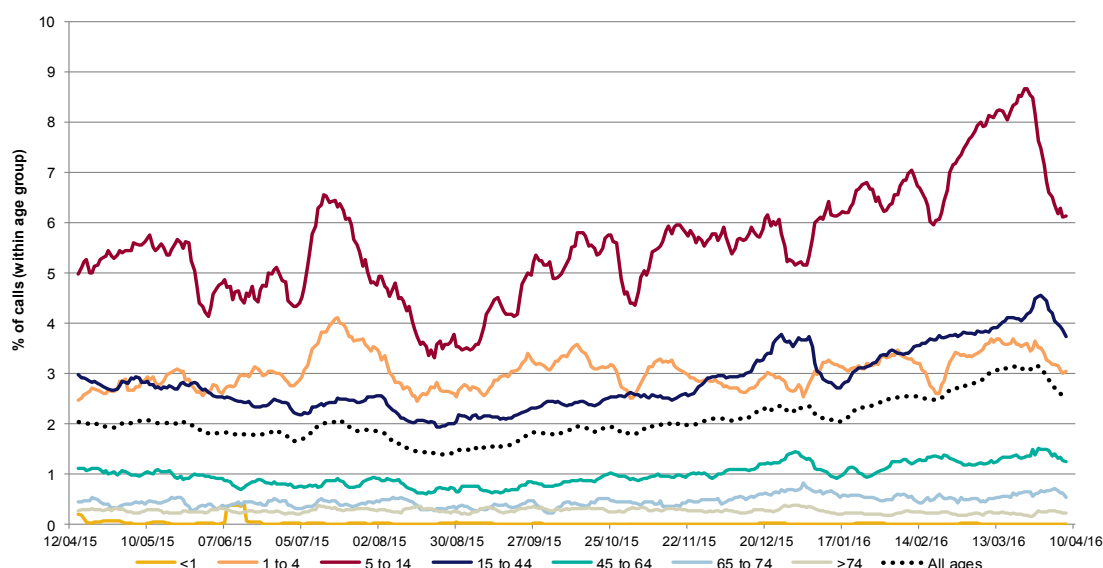
6: Sore throat

Daily 'sore throat' calls as a percentage of total calls. Baselines are constructed from historical data since 2010, including data from NHS 111 and NHS Direct.



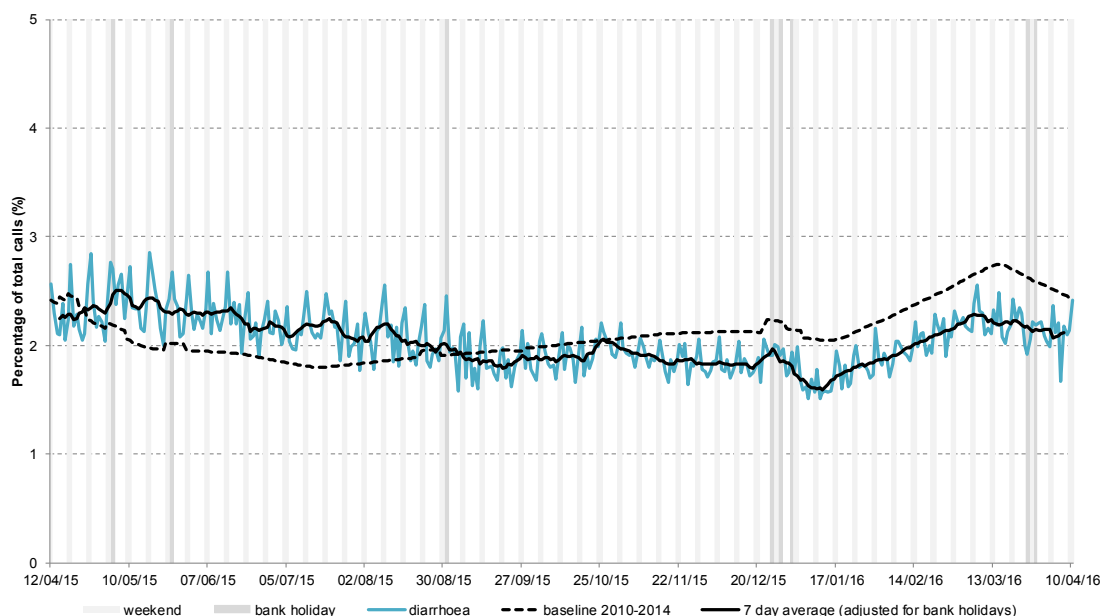
6a: Sore throat by age group

Sore throat calls as a percentage of total calls within each age group, shown as a 7 day moving average adjusted for bank holidays.



7: Diarrhoea

Daily 'diarrhoea' calls as a percentage of total calls. Baselines are constructed from historical data since 2010, including data from NHS 111 and NHS Direct.



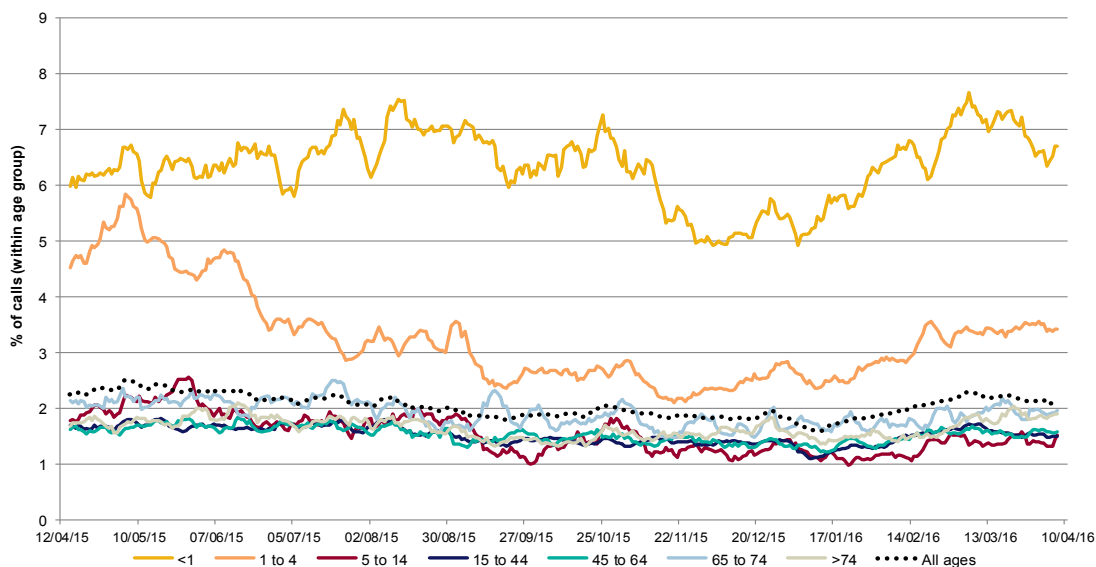
12 April 2016

Year: 2016

Week: 14

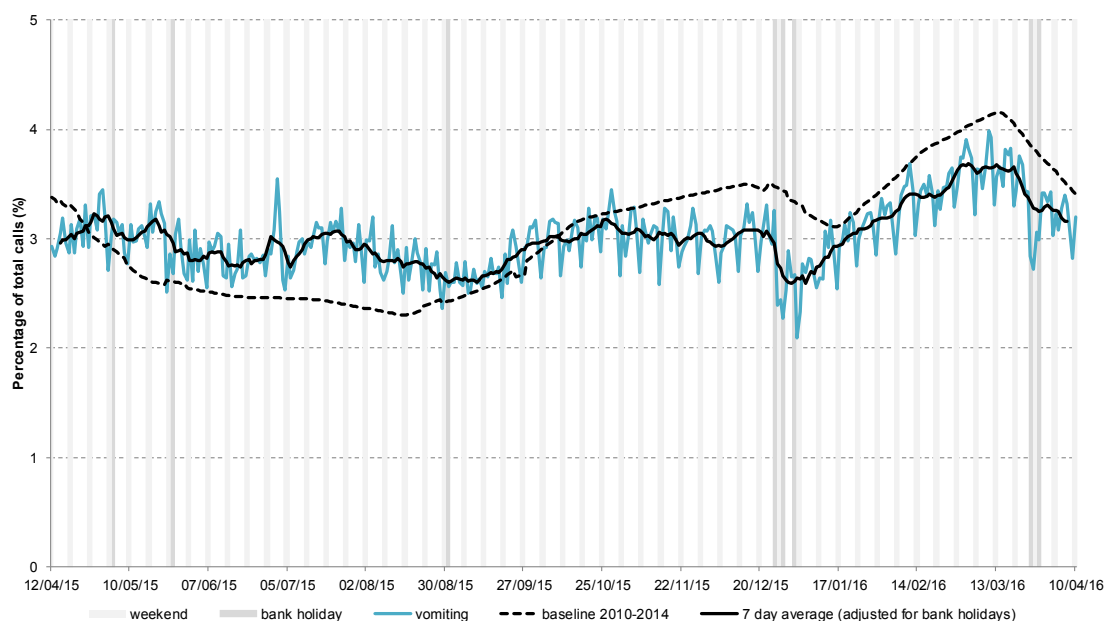
7a: Diarrhoea by age group

Diarrhoea calls as a percentage of total calls within each age group, shown as a 7 day moving average adjusted for bank holidays.



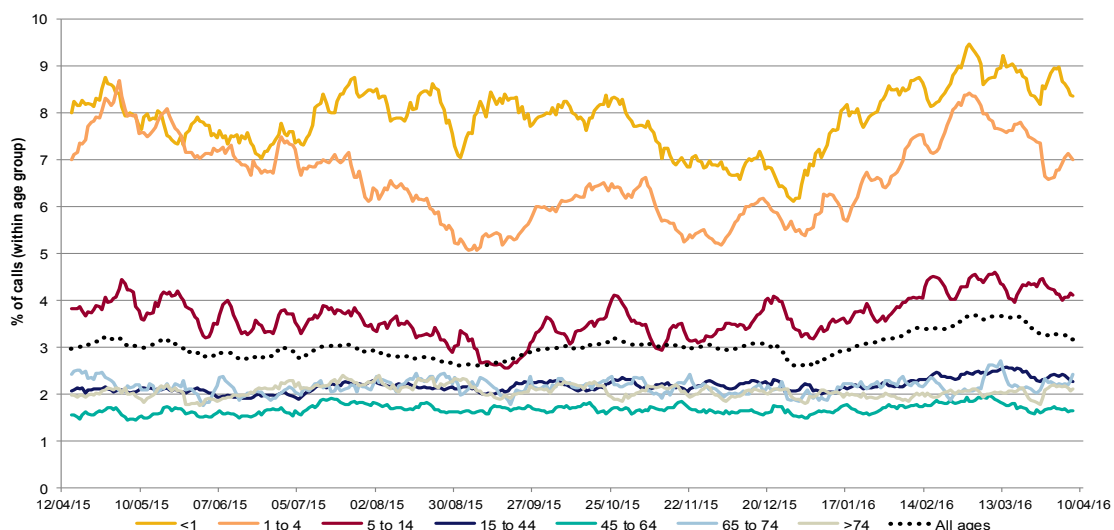
8: Vomiting

Daily 'vomiting' calls as a percentage of total calls. Baselines are constructed from historical data since 2010, including data from NHS 111 and NHS Direct.



8a: Vomiting by age group

Vomiting calls as a percentage of total calls within each age group, shown as a 7 day moving average adjusted for bank holidays.



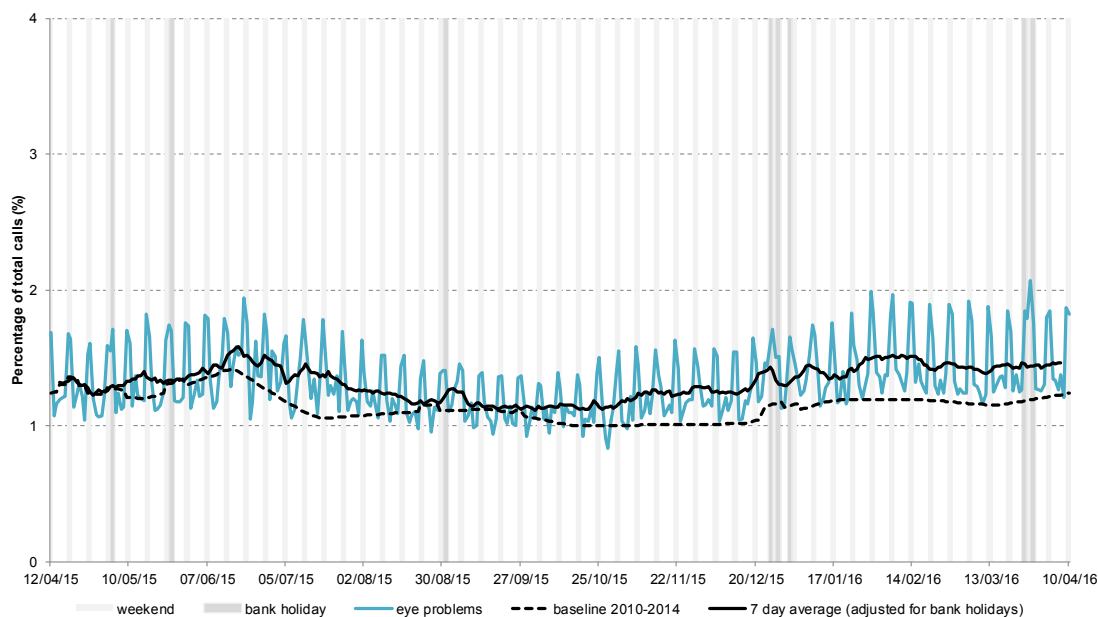
12 April 2016

Year: 2016

Week: 14

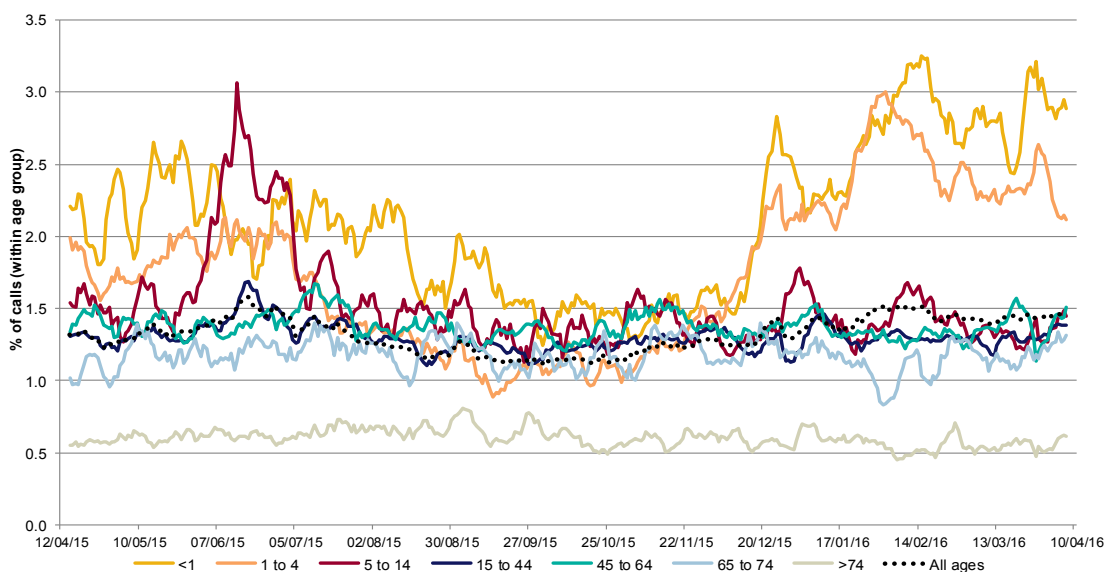
9: Eye problems

Daily 'eye problems' calls as a percentage of total calls. Baselines are constructed from historical data since 2010, including data from NHS 111 and NHS Direct.



9a: Eye problems by age group

Eye problems calls as a percentage of total calls within each age group, shown as a 7 day moving average adjusted for bank holidays.



Intentionally blank

12 April 2016

Year: 2016

Week: 14

Introduction to charts:

- Weekends and bank holidays are marked by vertical **grey** lines (bank holidays **darker grey**).
- A 7-day moving average (adjusted for bank holidays) is overlaid on the daily data reported in each chart, unless specified.
- Baselines are constructed using historical data, including data from both NHS111 and the NHS Direct syndromic system (which was replaced by NHS 111 data in September 2013). Seasonal trends reflect the average over past years, with levels adjusted to reflect differences between NHS 111 and NHS Direct data.
- This new syndromic surveillance system is still under development and further analyses at PHE Centre level will be included in future bulletins.
- NHS 111 call data are analysed on a daily basis to identify national and regional trends. A statistical algorithm underpins each system, routinely identifying activity that has increased significantly or is statistically significantly high for the time of year. Results from these daily analyses are assessed by the ReSST, along with analysis by age group, and anything deemed of public health importance is alerted by the team.

Notes and further information:

Further information about NHS 111 can be found at:

<http://www.nhs.uk/NHSEngland/AboutNHSservices/Emergencyandurgentcareservices/Pages/NHS-111.aspx>

The Remote Health Advice Syndromic Surveillance bulletin can also be downloaded from the PHE Real-time Syndromic Surveillance website which also contains more information about syndromic surveillance:

<https://www.gov.uk/government/collections/syndromic-surveillance-systems-and-analyses>

Acknowledgements:

We are grateful to NHS 111 and to HSCIC for their assistance and support in providing the anonymised call data that underpin the Remote Health Advice Syndromic Surveillance System.

Contact ReSST:
syndromic-surveillance
@phe.gov.uk

Remote Health Advice Syndromic Surveillance System Bulletin.

Produced by: PHE Real-time Syndromic Surveillance Team
6th Floor, 5 St Philip's Place, Birmingham, B3 2PW

Tel: 0344 225 3560 > Option 4 > Option 2

Fax: 0121 236 2215

Web: <https://www.gov.uk/government/collections/syndromic-surveillance-systems-and-analyses>