



27 May 2020

Year: 2020 Week: 21

In This Issue:

- Key messages.
- Diagnostic indicators at a glance.
- Weekly report statistics.
- Total attendances.
- Respiratory.
- Gastrointestinal.
- Cardiac.
- Notes and caveats.
- Acknowledgements.

Key messages

Data to: 24 May 2020

During week 21 the number of ED COVID-19-like attendances continued to decrease with levels highest in the 65+ years age group (figures 3 & 3a).

The number of ED attendances for acute respiratory infections and pneumonia decreased (figures 5 & 8). Attendances for both ARI and pneumonia remained highest in the 65+ years age group (figures 5a & 8a).

Please see '[notes and caveats](#)' for information about the COVID-19-like ED syndromic indicator including important caveats around the interpretation of this indicator.

Please note: the baselines presented have been revised, to more accurately account for the changes in total attendances in the 2 most recent weeks.

Diagnostic indicators at a glance:

Further details on the syndromic indicators reported can be found on page 9.

Indicator	Current trend	Level
COVID-19-like	decreasing	-
Respiratory	no trend	below
Acute Respiratory Infection	decreasing	below
Bronchiolitis	no trend	below
Influenza-like Illness	no trend	similar
Pneumonia	decreasing	below
Asthma	no trend	below
Gastrointestinal	increasing	similar
Gastroenteritis	no trend	below
Cardiac	increasing	above
Myocardial Ischaemia	no trend	similar

EDSSS weekly report statistics

Only Type 1 EDs meeting the weekly reporting criteria are included (see page 6 for details).

*max EDs included across full time period reported in charts, individual days may include fewer EDs.

Date	Total Attendances	Diagnoses Coded Number	%	Type 1 EDs Included
18/05/2020	15,228	11,816	77.6%	78
19/05/2020	13,912	10,896	78.3%	78
20/05/2020	13,730	10,598	77.2%	78
21/05/2020	14,231	11,260	79.1%	78
22/05/2020	14,327	11,269	78.7%	78
23/05/2020	13,498	10,694	79.2%	78
24/05/2020	13,887	10,796	77.7%	78
Total	98,813	77,329	78.3%	(max)* 78

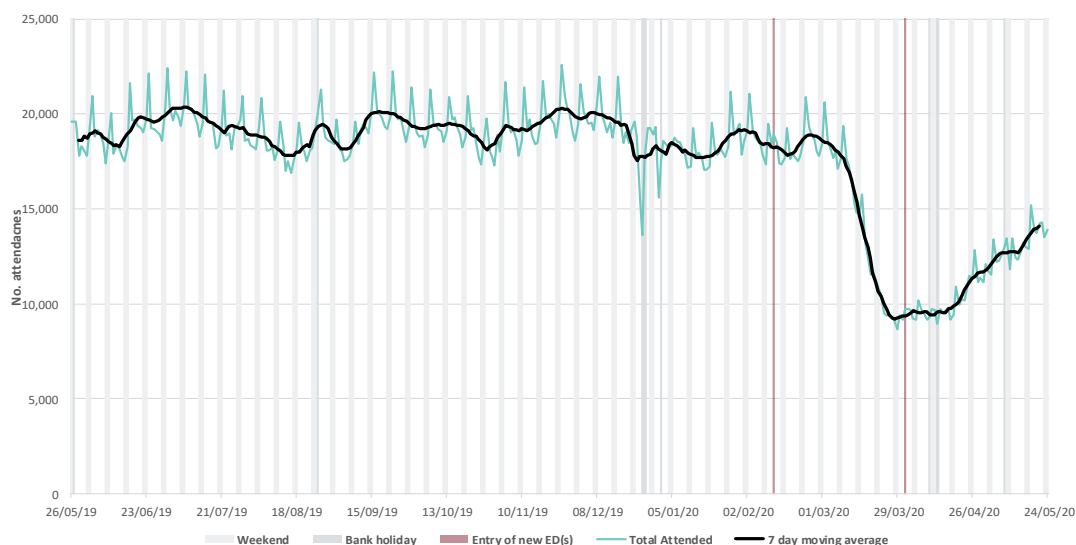
27 May 2020

Year: 2020 Week: 21

1: Total attendances.

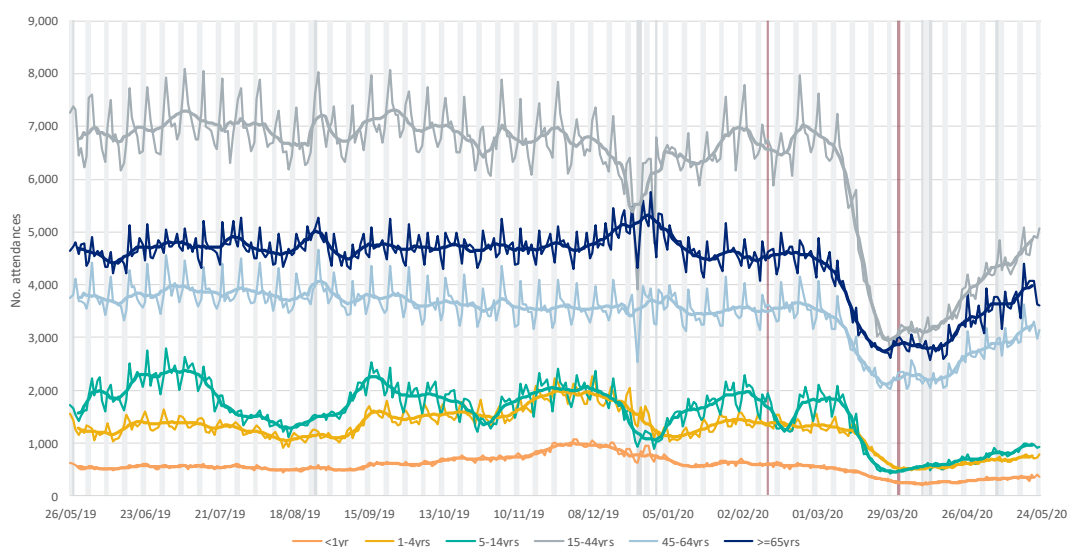
Daily number of total attendances recorded, across the EDSSS network.

The entry of new ED(s) is marked by a vertical **red** line (see page 6 for inclusion criteria).



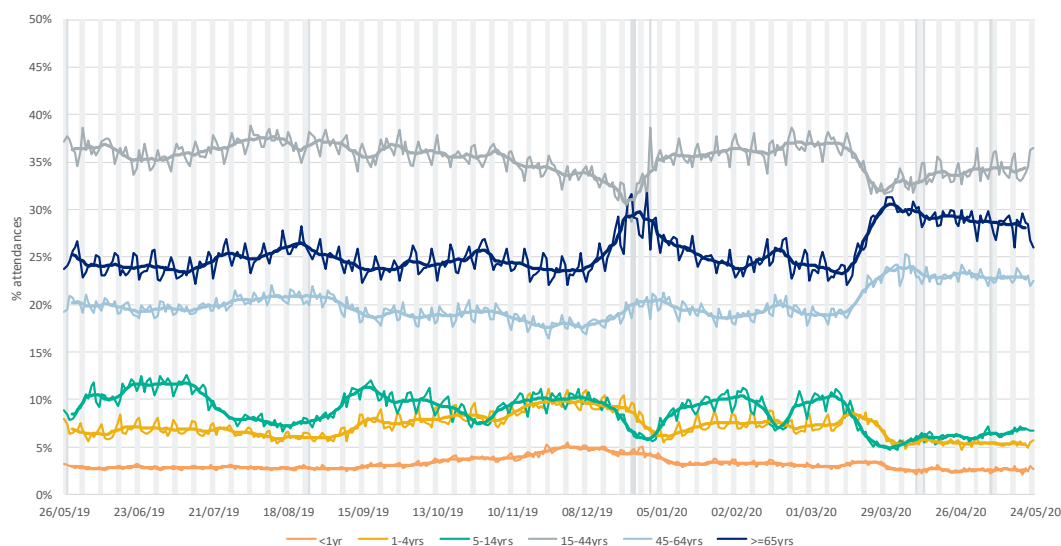
2a: Daily attendances by age: Numbers.

Daily number of total attendances, by age group, recorded across the EDSSS network.



2b: Daily attendances by age: Percentages

Daily percentage of total attendances by age group, recorded across the EDSSS network.

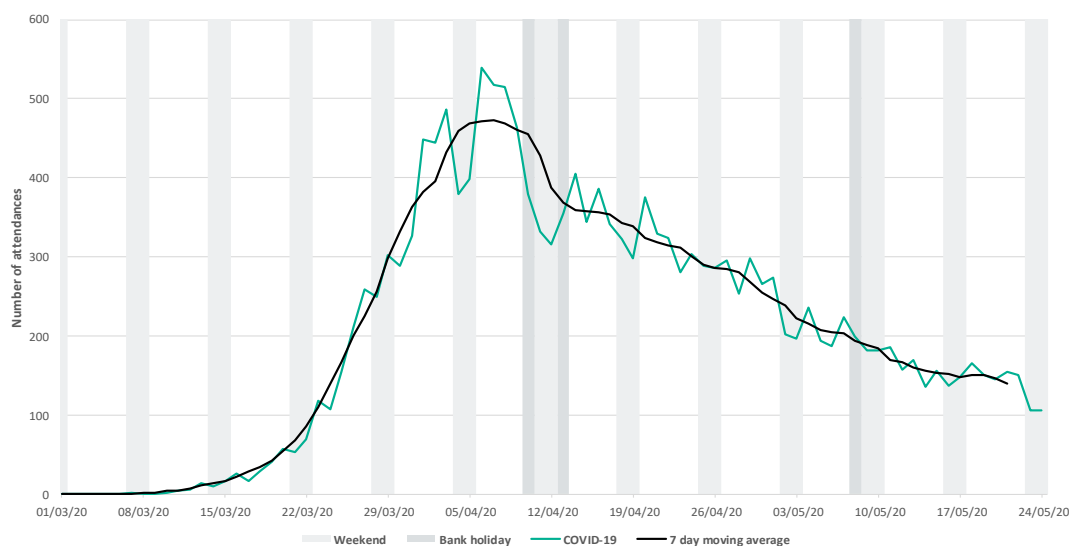


27 May 2020

Year: 2020 Week: 21

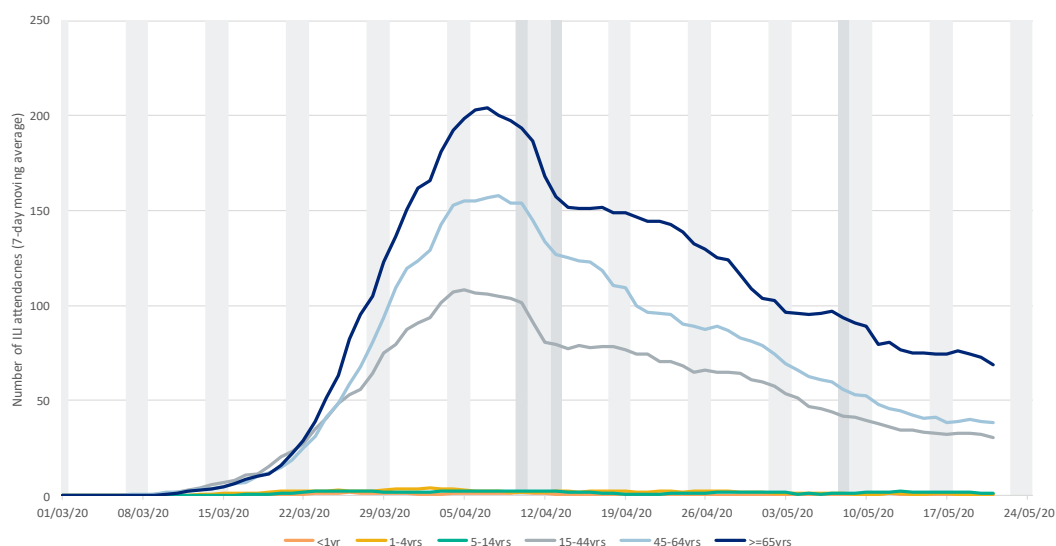
3: COVID-19-like.

Daily number of attendances recorded as COVID-19-like attendances across the EDSSS network.



3a: COVID-19-like by age group.

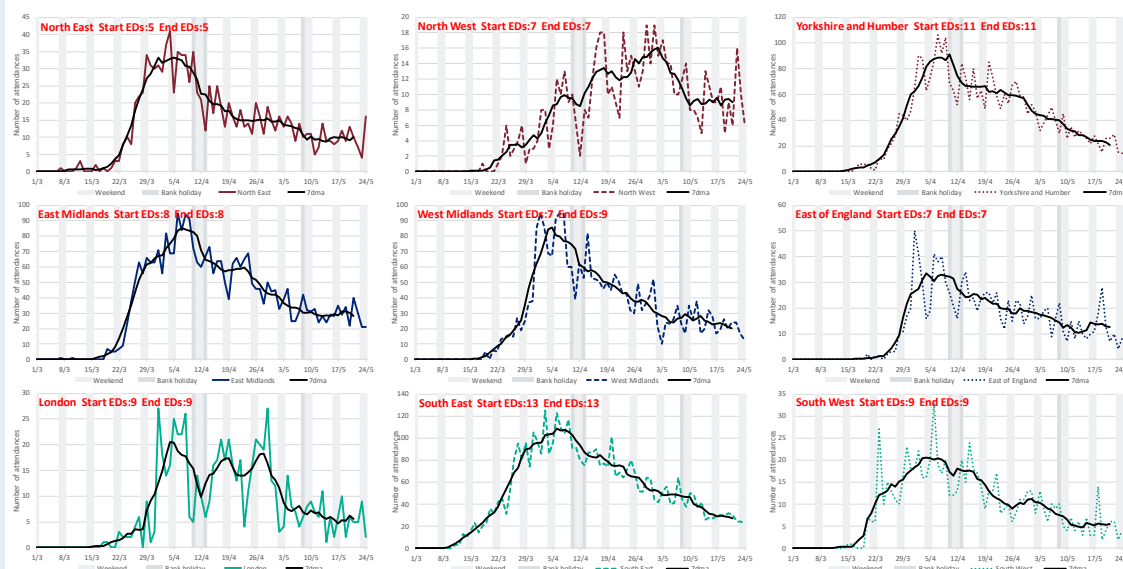
7 day moving average of COVID-19-like attendances within each age group.



3b: COVID-19-like by PHE Centre

Daily attendances and 7 day moving average of COVID-19-like attendances within each PHE Centre (with the number of EDs included at the start and end of each time series).

Please see ['notes and caveats'](#) for information on how EDs are selected for inclusion each week.

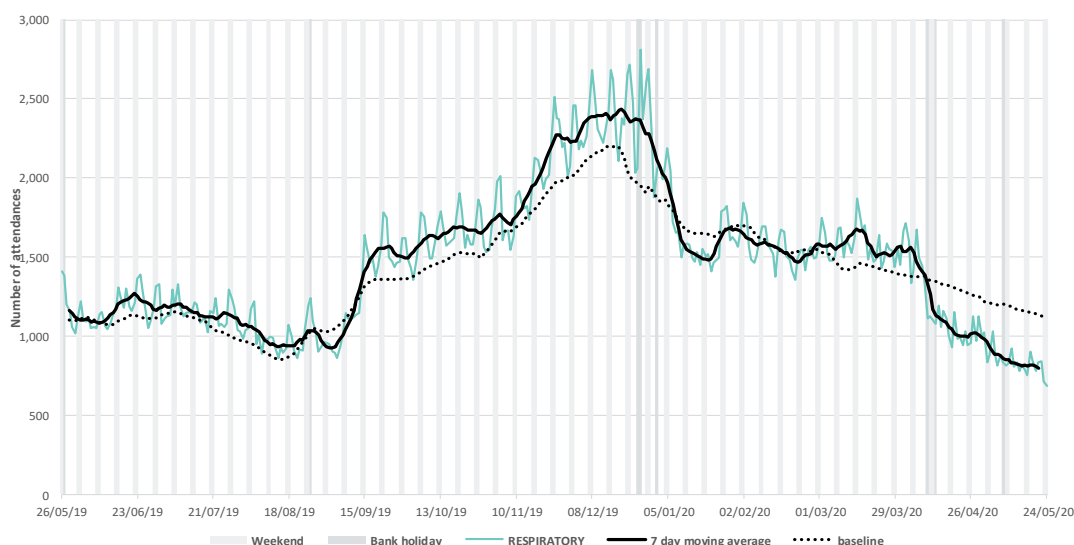


27 May 2020

Year: 2020 Week: 21

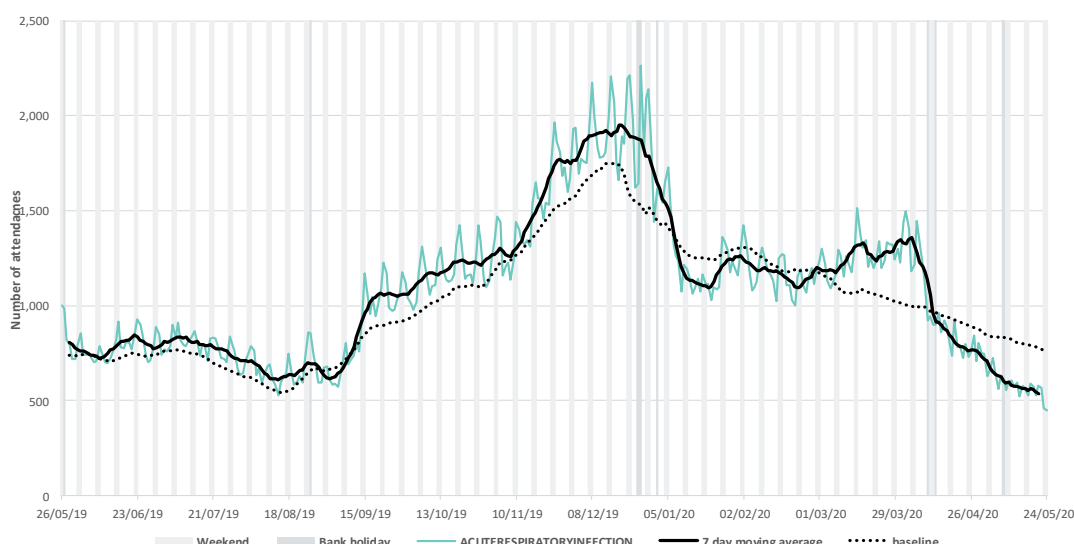
4: Respiratory.

Daily number of attendances recorded as respiratory attendances across the EDSSS network.



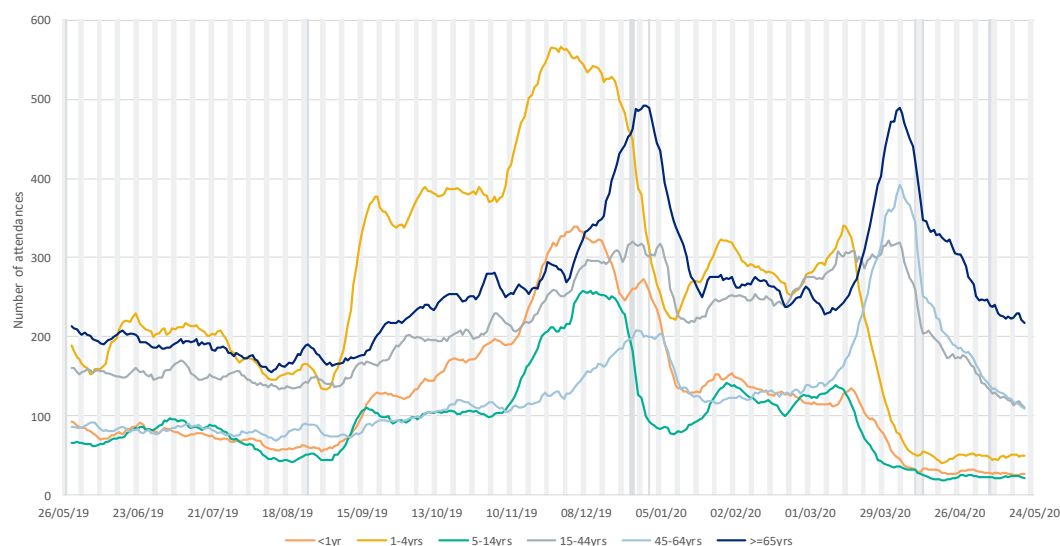
5: Acute Respiratory Infection.

Daily number of all attendances recorded as acute respiratory infection attendances across the EDSSS network.



5a: Acute Respiratory Infection by age group.

7 day moving average of ARI attendances within each age group.

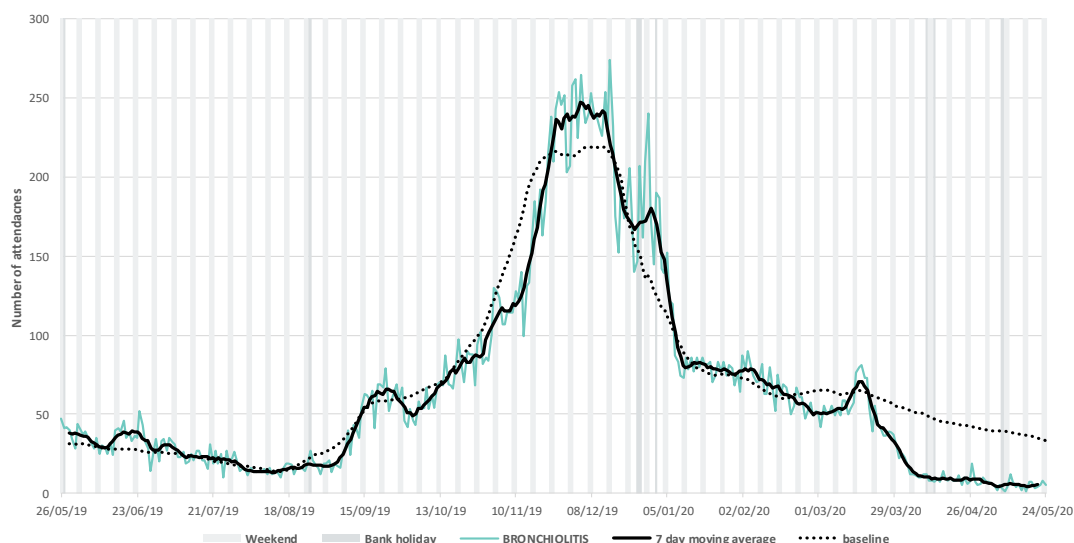


27 May 2020

Year: 2020 Week: 21

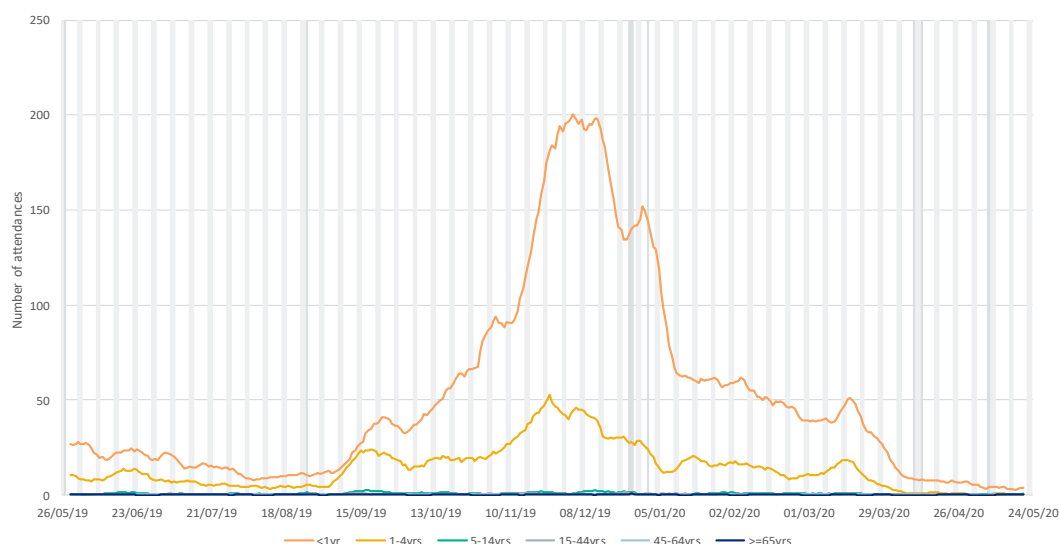
6: Bronchiolitis/ bronchitis.

Daily number of attendances recorded as bronchiolitis/ acute bronchitis attendances across the EDSSS network.



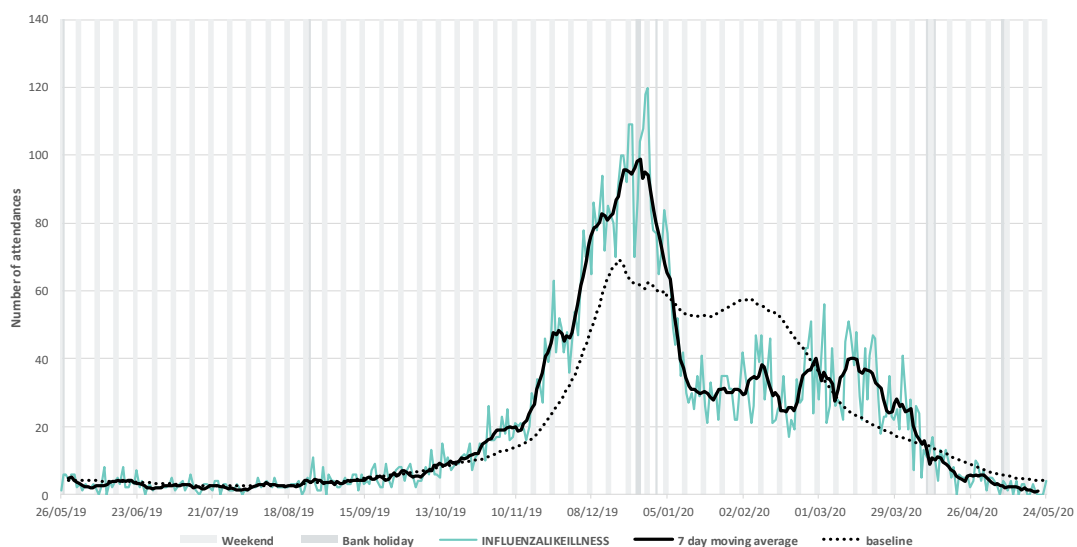
6a: Bronchiolitis/ bronchitis by age group

7 day moving average of bronchiolitis/ bronchitis attendances within each age group.



7: Influenza-like illness.

Daily number of attendances recorded as influenza-like illness attendances across the EDSSS network.

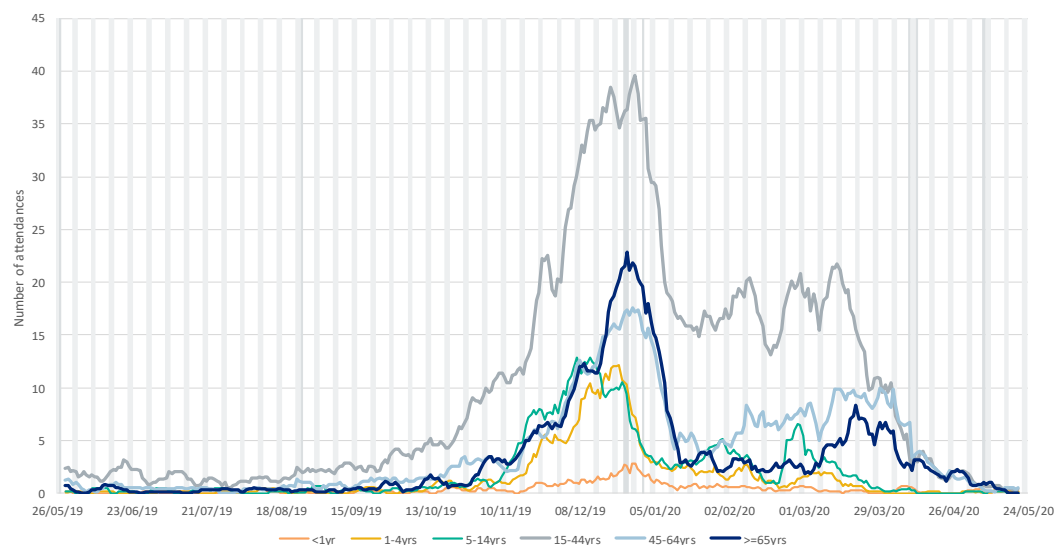


27 May 2020

Year: 2020 Week: 21

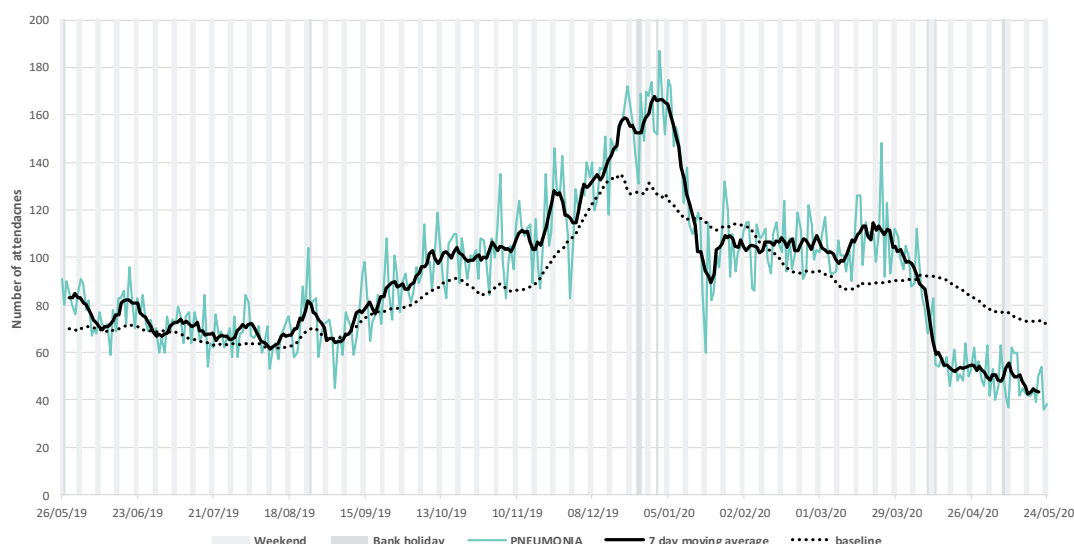
7a: Influenza-like illness by age group

7 day moving average of ILI attendances within each age group.



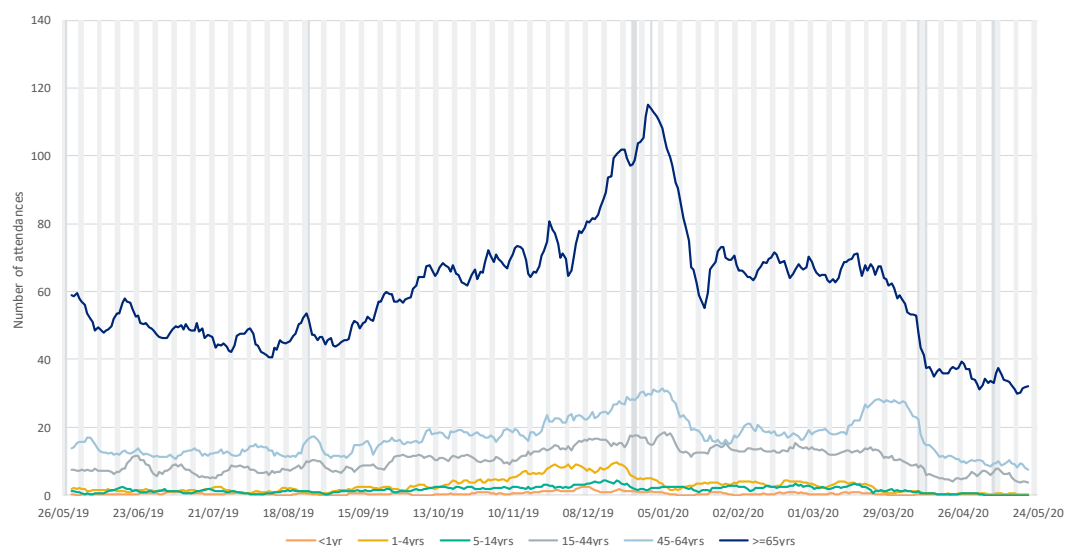
8: Pneumonia.

Daily number of attendances recorded as pneumonia attendances across the EDSSS network.



8a: Pneumonia by age group.

7 day moving average of pneumonia attendances within each age group.

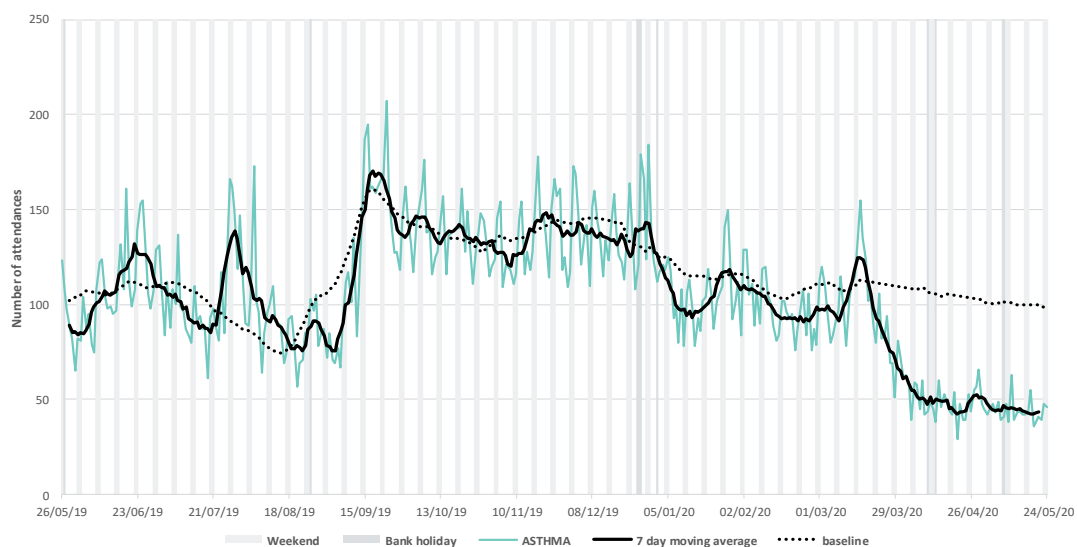


27 May 2020

Year: 2020 Week: 21

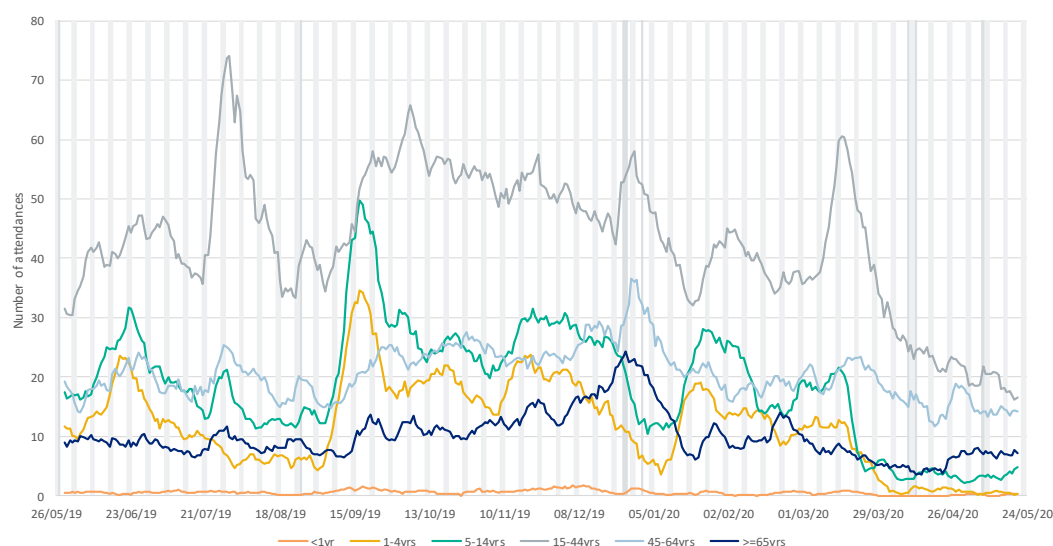
9: Asthma.

Daily number of attendances recorded as asthma/wheeze/difficulty breathing across the EDSSS network.



9a: Asthma by age group.

7 day moving average of asthma attendances within each age group.



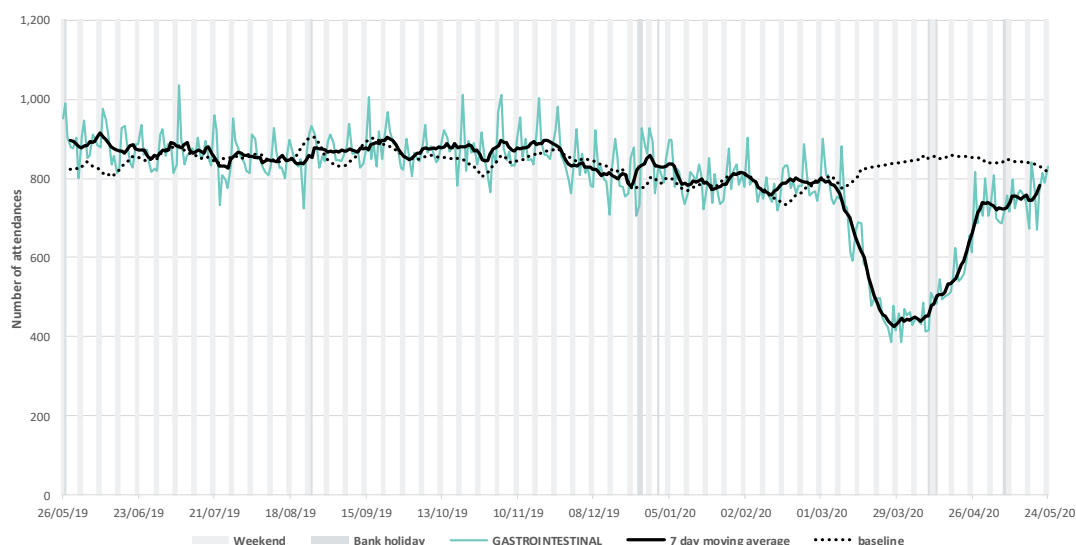
Intentionally left blank

27 May 2020

Year: 2020 Week: 21

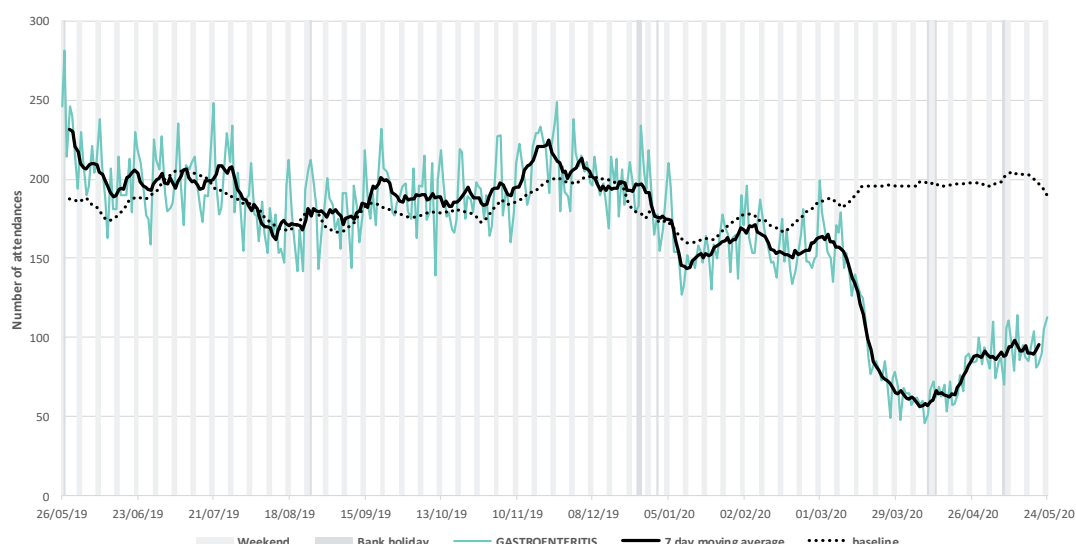
10: Gastrointestinal.

Daily number of attendances recorded as gastrointestinal across the EDSSS network.



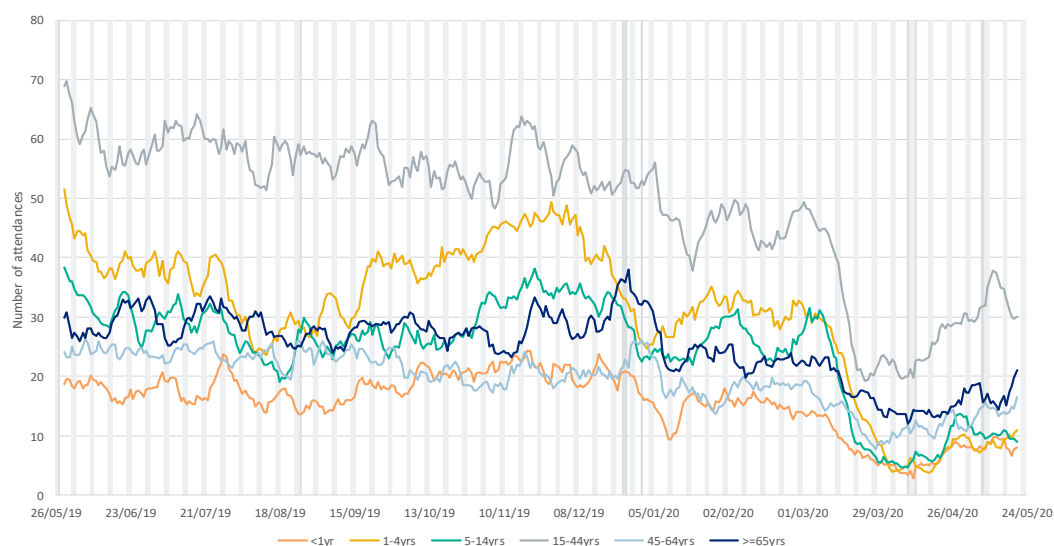
11: Gastroenteritis

Daily number of attendances recorded as gastroenteritis across the EDSSS network.



11a: Gastroenteritis by age group.

7 day moving average of gastroenteritis attendances within each age group.

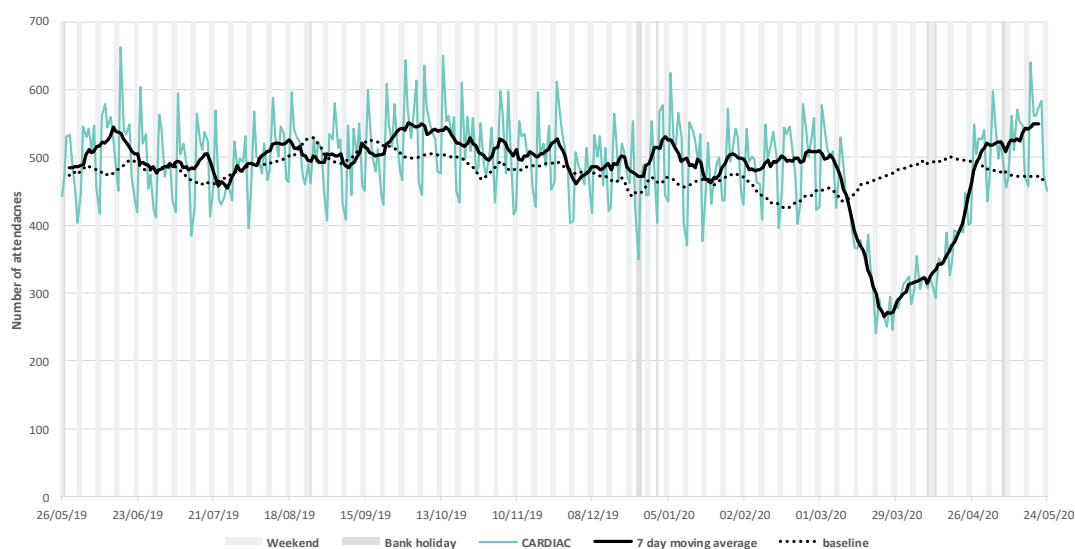


27 May 2020

Year: 2020 Week: 21

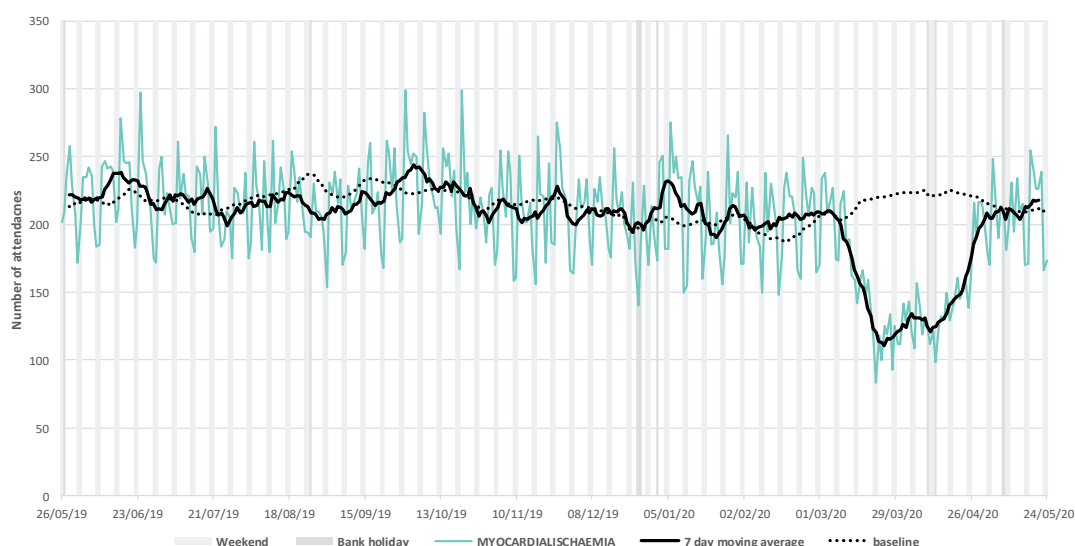
12: Cardiac.

Daily number of attendances recorded as cardiac attendances across the EDSSS network.



13: Myocardial Ischaemia.

Daily number of attendances recorded as myocardial ischaemia attendances across the EDSSS network.



27 May 2020

Year: 2020 Week: 21

Notes and caveats:

- ▶ **National EDSSS** began operating in April 2018. Following the introduction of the Emergency Care Data Set (ECDS) the national reporting of secondary care activity data through the commissioning data sets mechanism from EDs to NHS Digital became a daily feed: <https://www.england.nhs.uk/ourwork/tsd/ec-data-set/>
- ▶ EDSSS receives an automated daily transfer of anonymised ED data from NHS Digital
- ▶ The number of EDs reporting through ECDS continues to increase
- ▶ **Not all EDs currently provide data through ECDS on a daily basis**
- ▶ EDs are eligible for inclusion in this report only where the EDSSS reporting criteria have been met during the surveillance week reported:
 - Data relates to attendances at a type 1 ED
 - Data for 7 of the 7 most recent days was received by PHE
 - Data for those days was received within 2 calendar days of the patient arrival
- ▶ Where an ED meets these criteria, all data received from that ED previous to the current surveillance week is included
- ▶ EDs eligible for inclusion is likely to change each week, which will in turn affect the historical data inclusion
- ▶ Individual EDs will not be identified in syndromic surveillance reporting in these bulletins
- ▶ **All EDs report diagnoses to EDSSS using SnomedCT codes**
- ▶ Not all diagnoses are confirmed
- ▶ The syndromic indicators presented in this bulletin are based on the primary diagnosis of each attendance as reported by EDs using SnomedCT codes:
 - Respiratory:** All respiratory diseases and conditions (infectious and non infectious).
 - Acute Respiratory Infections (ARI):** All acute infectious respiratory diseases.
 - Asthma:** As indicated by title.
 - Bronchiolitis/ bronchitis:** As indicated by title (excluding 'chronic').
 - Influenza-like Illness (ILI):** As indicated by title.
 - Pneumonia:** As indicated by title.
 - COVID-19-like:** Coronavirus or Severe Acute Respiratory Syndrome (SARS).
 - Gastrointestinal:** All gastrointestinal diseases and conditions (infectious and non infectious).
 - Gastroenteritis:** All infectious gastrointestinal diseases.
 - Cardiac:** All cardiac conditions.
 - Myocardial Ischaemia:** All ischaemic heart disease.
- ▶ The COVID-19 indicator is an underestimation of number of COVID-19 attendances as it only includes attendances with a COVID-19-like diagnosis as their primary diagnosis.
- ▶ Not all EDs have used a COVID-19-like diagnosis code.
- ▶ The EDSSS COVID-19 indicator should therefore be used to monitor trends in ED attendances and not numbers of COVID-19 cases.
- ▶ Baselines represent seasonally expected levels of activity and are constructed from historical data since July 2010. They take into account the change from sentinel EDSSS to National EDSSS and current coverage. Gastroenteritis, diarrhoea and vomiting baselines also account for changes since the introduction of rotavirus vaccine in July 2013. Baselines are refreshed using the latest data on a regular basis.
- ▶ **Sentinel EDSSS** 2010 to March 2018, collected data through a bespoke, voluntary network of EDs across England and Northern Ireland
- ▶ **Sentinel EDSSS** reports be found in bulletins up to and including week 13 2018: <https://www.gov.uk/government/collections/syndromic-surveillance-systems-and-analyses>

Acknowledgements:

We are grateful to the clinicians in each ED and other staff within each Trust for their continued involvement in the EDSSS.

We thank the Royal College of Emergency Medicine, NHS Digital and NHS England for their support in the development of national EDSSS, using anonymised data collection from ECDS.

Emergency Department Syndromic Surveillance System Bulletin.

Produced by: PHE Real-time Syndromic Surveillance Team
1st Floor, 5 St Philips Place, Birmingham, B3 2PW

Tel: 0344 225 3560 > Option 4 > Option 2 **Email:** syndromic.surveillance@phe.gov.uk

Web: <https://www.gov.uk/government/collections/syndromic-surveillance-systems-and-analyses> 10